

Mills County, Iowa
 Horizontal Datum: **NAD 83(2011)** - Vertical Datum: **NAVD 1988**
 Iowa State Plane South Zone (1402)
 Iowa Regional Coordinate System, Zone 6 Council Bluffs
 US Survey Feet
2016

Point Name: **33**

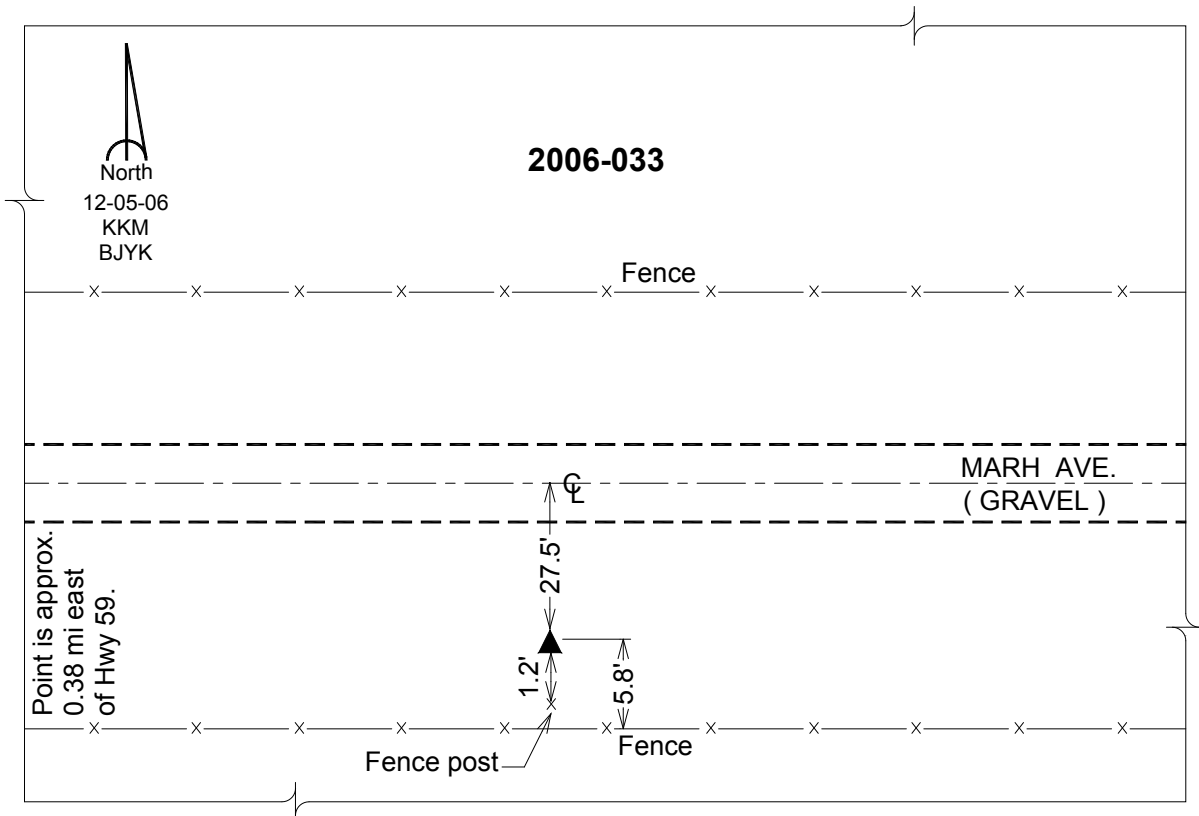
Designation: 2006-033 Mills Co GPS Control Pt.

NAD 83(NA2011) Latitude: **N40°59'14.53507"** Longitude: **W95°23'12.58229"**
 NAVD 88 Ortho Height: **1202.977sft** Ellip. Ht: **1107.100sft** Geoid12A

Iowa South Zone (1402) Northing: **365378.792sft** Easting: **1119553.524sft**
 Mapping Angle: **-1°14'34"** Combination Scale Factor: **0.999902453**

IaRCS Zone 6 Northing: **6868843.013sft** Easting: **16595669.041sft**
 Mapping Angle: **00° 13' 38"** Combination Scale Factor: **0.999996428**

Monument Type: Berntsen Top Security Rod Monument with a 2-1/2" dia. domed survey cap and permanent magnet encased in a white PVC pipe with a NGS style aluminum access cover.



This document was prepared by Dan Corbin, Inc. on February 8, 2016 for Mills County, Iowa.