

Mills County, Iowa

Horizontal Datum: **NAD 83(2011)** - Vertical Datum: **NAVD 1988**
Iowa State Plane South Zone (1402)
Iowa Regional Coordinate System, Zone 6 Council Bluffs
US Survey Feet
2016

Point Name: **34**

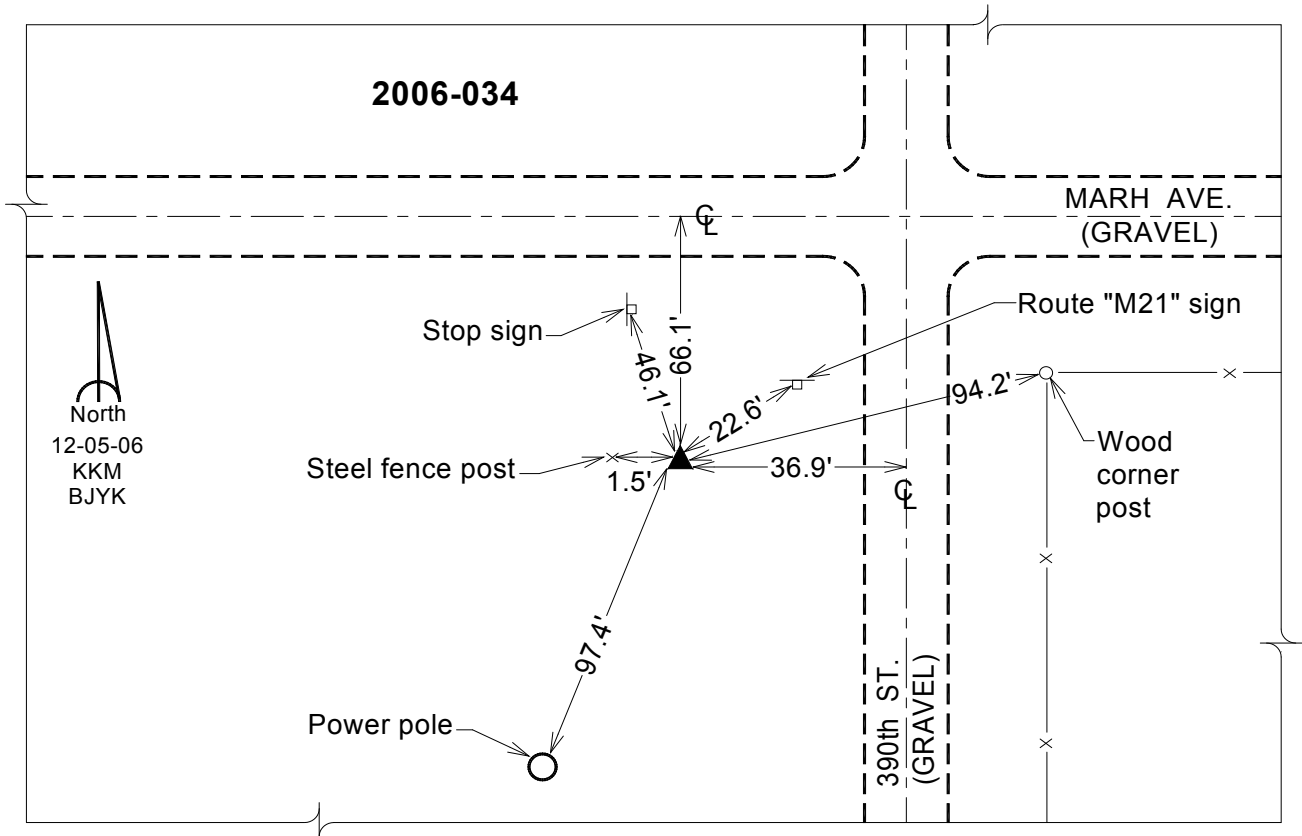
Designation: 2006-034 Mills Co GPS Control Pt.

NAD 83(NA2011) Latitude: **N40°59'13.99310"** Longitude: **W95°26'31.26141"**
NAVD 88 Ortho Height: **1186.054sft** Ellip. Ht: **1090.822sft** Geoid12A

Iowa South Zone (1402) Northing: **365659.265sft** Easting: **1104319.848sft**
Mapping Angle: **-1°16'45"** Combination Scale Factor: **0.999903240**

laRCS Zone 6 Northing: **6868732.531sft** Easting: **16580431.772sft**
Mapping Angle: **00° 11' 28"** Combination Scale Factor: **0.999994141**

Monument Type: Berntsen Top Security Rod Monument with a 2-1/2" dia. domed survey cap and permanent magnet encased in a white PVC pipe with a NGS style aluminum access cover.



This document was prepared by Dan Corbin, Inc. on February 8, 2016 for Mills County, Iowa.