

Mills County, Iowa
Horizontal Datum: **NAD 83(2011)** - Vertical Datum: **NAVD 1988**
Iowa State Plane South Zone (1402)
Iowa Regional Coordinate System, Zone 6 Council Bluffs
US Survey Feet
2016

Point Name: **35**

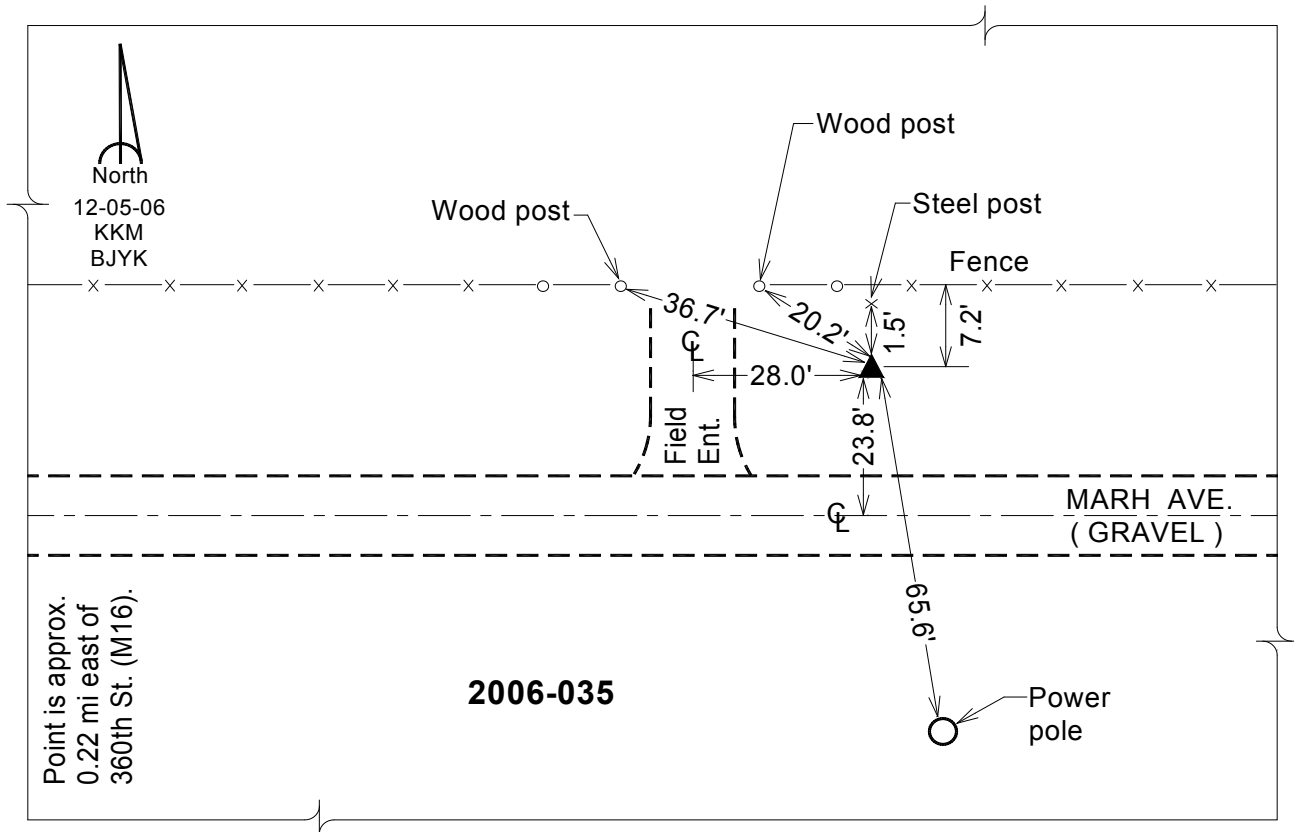
Designation: 2006-035 Mills Co GPS Control Pt.

NAD 83(NA2011) Latitude: **N40°59'14.67872"** Longitude: **W95°29'43.81511"**
NAVD 88 Ortho Height: **1149.886sft** Ellip. Ht: **1055.273sft** **Geoid12A**

Iowa South Zone (1402) Northing: **366062.827sft** Easting: **1089558.788sft**
Mapping Angle: **-1°18'52"** Combination Scale Factor: **0.999904924**

IaRCS Zone 6 Northing: **6868757.197sft** Easting: **16565663.891sft**
Mapping Angle: **00° 09' 22"** Combination Scale Factor: **0.999993378**

Monument Type: Berntsen Top Security Rod Monument with a 2-1/2" dia. domed survey cap and permanent magnet encased in a white PVC pipe with a NGS style aluminum access cover.



This document was prepared by Dan Corbin, Inc. on February 8, 2016 for Mills County, Iowa.