

**Mills County, Iowa**  
Horizontal Datum: **NAD 83(2011)** - Vertical Datum: **NAVD 1988**  
Iowa State Plane South Zone (1402)  
Iowa Regional Coordinate System, Zone 6 Council Bluffs  
US Survey Feet  
**2016**

Point Name: **36**

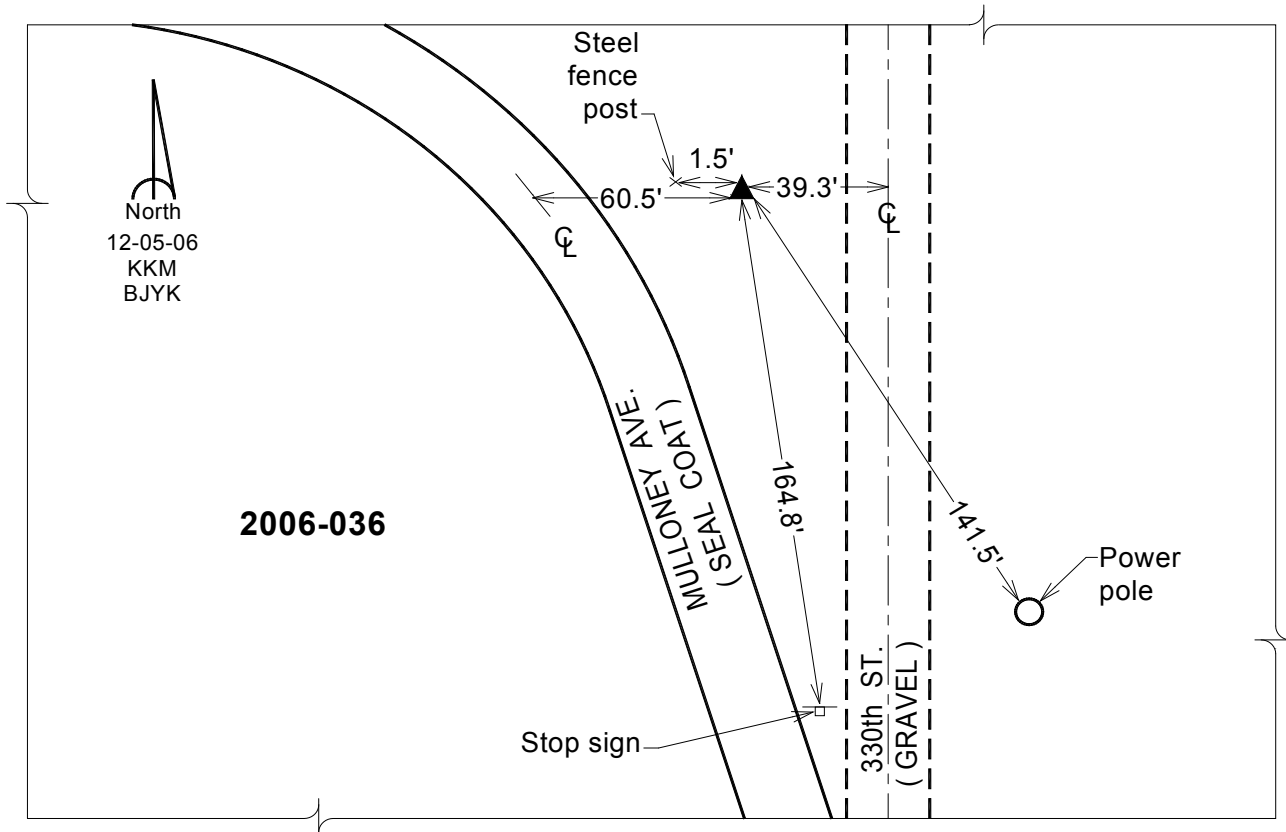
**Designation:** 2006-036 Mills Co GPS Control Pt.

NAD 83(NA2011) Latitude: **N40°59'04.90212"** Longitude: **W95°33'23.56597"**  
NAVD 88 Ortho Height: **998.318sft** Ellip. Ht: **904.381sft** Geoid12A

**Iowa South Zone (1402)** Northing: **365466.164sft** Easting: **1072687.905sft**  
Mapping Angle: **-1°21'17"** Combination Scale Factor: **0.999912300**

**IaRCS Zone 6** Northing: **6867727.692sft** Easting: **16548812.402sft**  
Mapping Angle: **00° 06' 57"** Combination Scale Factor: **0.999998401**

**Monument Type:** Berntsen Top Security Rod Monument with a 2-1/2" dia. domed survey cap and permanent magnet encased in a white PVC pipe with a NGS style aluminum access cover.



*This document was prepared by Dan Corbin, Inc. on February 8, 2016 for Mills County, Iowa.*