

Mills County, Iowa
Horizontal Datum: **NAD 83(2011)** - Vertical Datum: **NAVD 1988**
Iowa State Plane South Zone (1402)
Iowa Regional Coordinate System, Zone 6 Council Bluffs
US Survey Feet
2016

Point Name: **37**

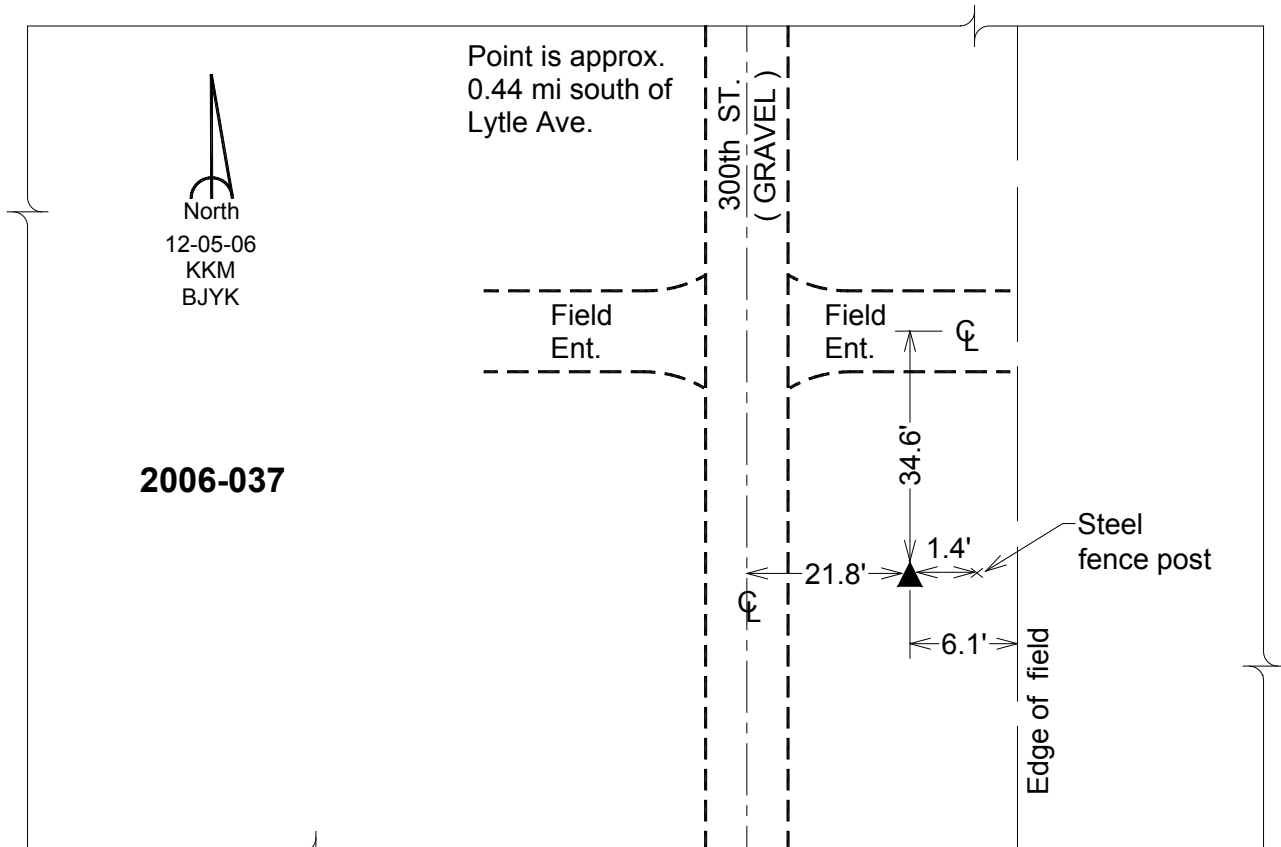
Designation: 2006-037 Mills Co GPS Control Pt.

NAD 83(NA2011) Latitude: **N40°59'17.13146"** Longitude: **W95°36'49.56176"**
NAVD 88 Ortho Height: **1127.829sft** Ellip. Ht: **1034.745sft** Geoid12A

Iowa South Zone (1402) Northing: **367082.120sft** Easting: **1056924.639sft**
Mapping Angle: **-1°23'32"** Combination Scale Factor: **0.999905859**

IaRCS Zone 6 Northing: **6868938.649sft** Easting: **16533011.503sft**
Mapping Angle: **00° 04' 42"** Combination Scale Factor: **0.999990679**

Monument Type: Berntsen Top Security Rod Monument with a 2-1/2" dia. domed survey cap and permanent magnet encased in a white PVC pipe with a NGS style aluminum access cover.



This document was prepared by Dan Corbin, Inc. on February 8, 2016 for Mills County, Iowa.