

**Mills County, Iowa**

Horizontal Datum: **NAD 83(2011)** - Vertical Datum: **NAVD 1988**

Iowa State Plane South Zone (1402)

Iowa Regional Coordinate System, Zone 6 Council Bluffs

US Survey Feet

**2016**

Point Name: **38**

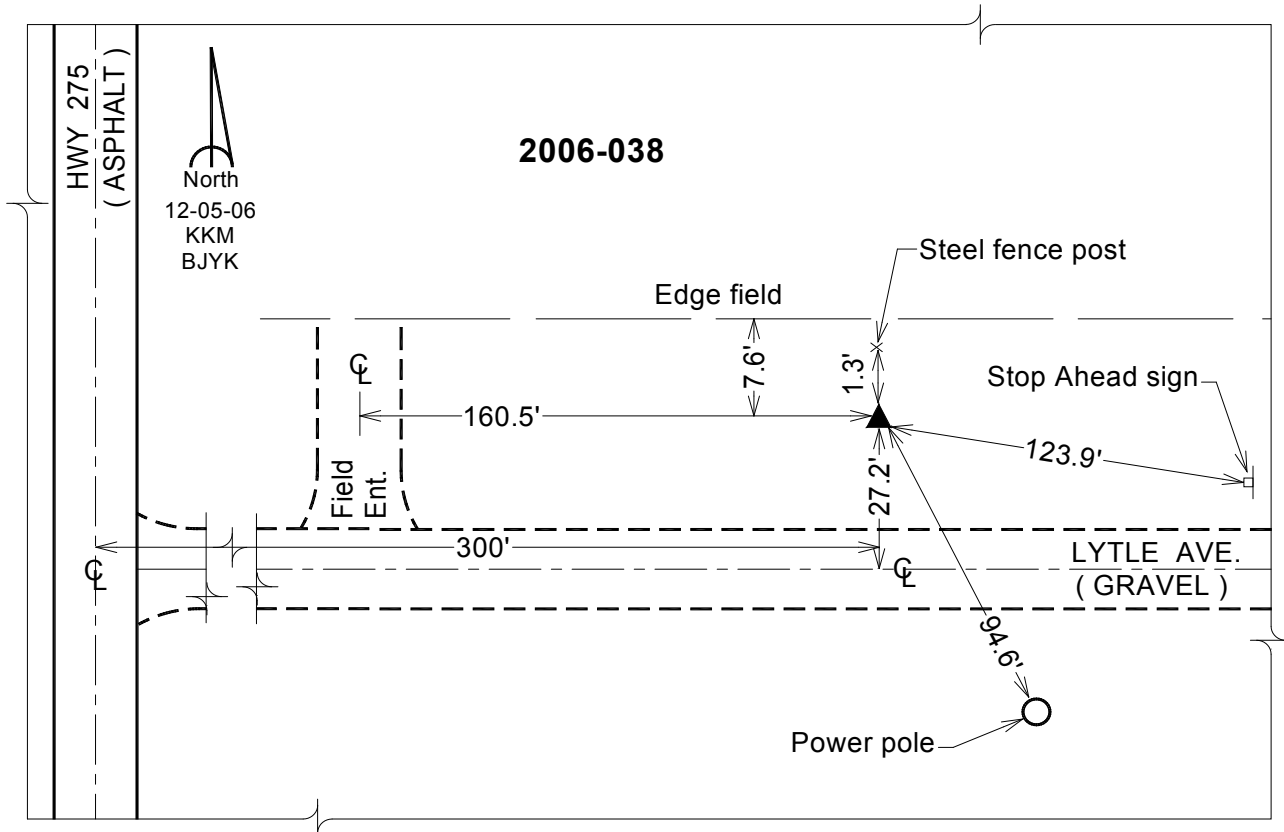
**Designation:** 2006-038 Mills Co GPS Control Pt.

NAD 83(NA2011) Latitude: **N40°59'53.36099"** Longitude: **W95°40'12.03568"**  
NAVD 88 Ortho Height: **1247.632sft** Ellip. Ht: **1155.473sft** Geoid12A

**Iowa South Zone (1402)** Northing: **371129.835sft** Easting: **1041493.824sft**  
Mapping Angle: **-1°25'46"** Combination Scale Factor: **0.999899466**

**IaRCS Zone 6** Northing: **6872589.256sft** Easting: **16517480.557sft**  
Mapping Angle: **00° 02' 30"** Combination Scale Factor: **0.999984000**

**Monument Type:** Berntsen Top Security Rod Monument with a 2-1/2" dia. domed survey cap and permanent magnet encased in a white PVC pipe with a NGS style aluminum access cover.



*This document was prepared by Dan Corbin, Inc. on February 8, 2016 for Mills County, Iowa.*