

Mills County, Iowa
Horizontal Datum: **NAD 83(2011)** - Vertical Datum: **NAVD 1988**
Iowa State Plane South Zone (1402)
Iowa Regional Coordinate System, Zone 6 Council Bluffs
US Survey Feet
2016

Point Name: **40**

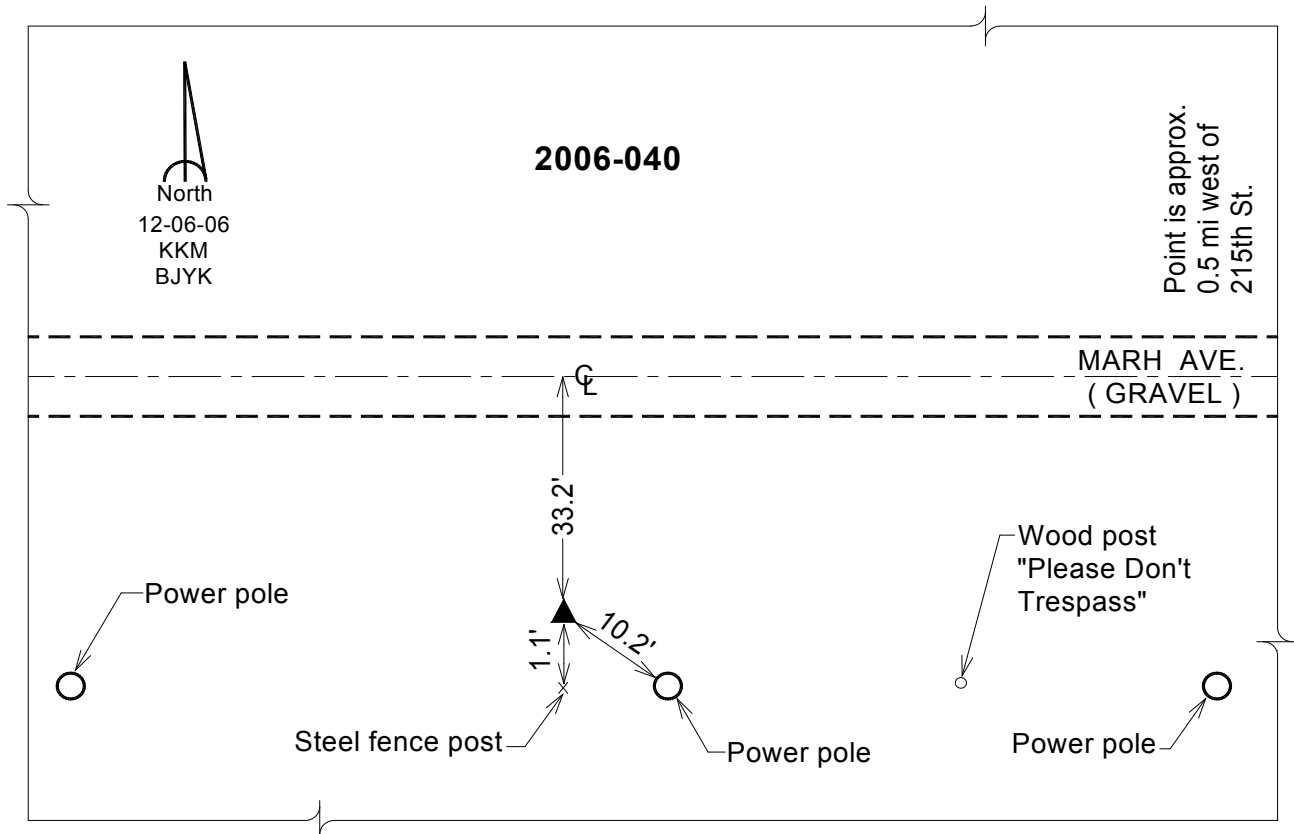
Designation: 2006-040 Mills Co GPS Control Pt.

NAD 83(NA2011) Latitude: **N40°59'13.16670"** Longitude: **W95°47'08.25307"**
NAVD 88 Ortho Height: **949.651sft** Ellip. Ht: **858.531sft** Geoid**12A**

Iowa South Zone (1402) Northing: **367880.715sft** Easting: **1009484.102sft**
Mapping Angle: **-1°30'20"** Combination Scale Factor: **0.999914338**

IaRCS Zone 6 Northing: **6868519.097sft** Easting: **16485562.111sft**
Mapping Angle: **-00° 02' 03"** Combination Scale Factor: **0.999998112**

Monument Type: Berntsen Top Security Rod Monument with a 2-1/2" dia. domed survey cap and permanent magnet encased in a white PVC pipe with a NGS style aluminum access cover.



This document was prepared by Dan Corbin, Inc. on February 8, 2016 for Mills County, Iowa.