

Mills County, Iowa
 Horizontal Datum: **NAD 83(2011)** - Vertical Datum: **NAVD 1988**
 Iowa State Plane South Zone (1402)
 Iowa Regional Coordinate System, Zone 6 Council Bluffs
 US Survey Feet
2016

Point Name: **41**

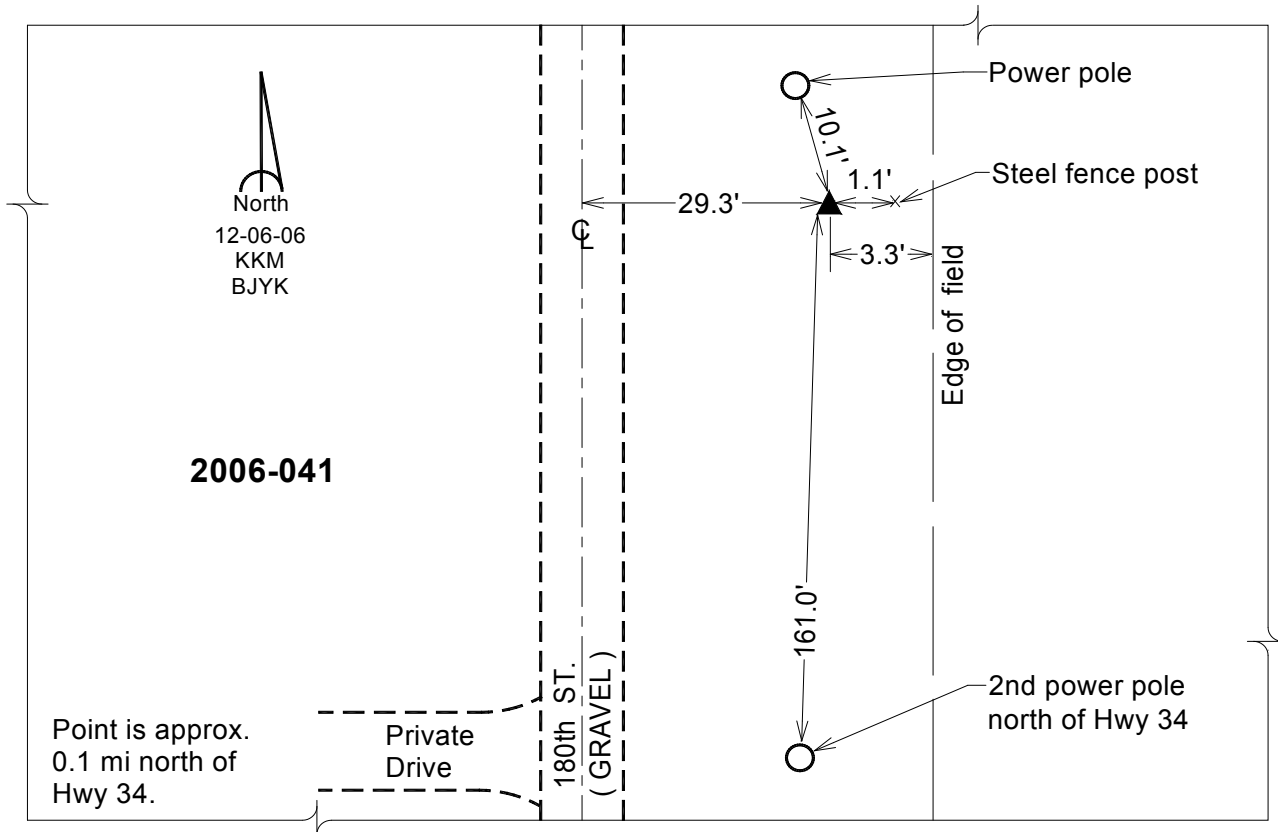
Designation: 2006-041 Mills Co GPS Control Pt.

NAD 83(NA2011) Latitude: **N41°00'10.41407"** Longitude: **W95°50'31.55541"**
 NAVD 88 Ortho Height: **953.839sft** Ellip. Ht: **863.489sft** Geoid12A

Iowa South Zone (1402) Northing: **374086.936sft** Easting: **994054.824sft**
 Mapping Angle: **-1°32'34"** Combination Scale Factor: **0.999913109**

laRCS Zone 6 Northing: **6874327.593sft** Easting: **16469977.245sft**
 Mapping Angle: **-00° 04' 17"** Combination Scale Factor: **0.999998667**

Monument Type: Berntsen Top Security Rod Monument with a 2-1/2" dia. domed survey cap and permanent magnet encased in a white PVC pipe with a NGS style aluminum access cover.



This document was prepared by Dan Corbin, Inc. on February 8, 2016 for Mills County, Iowa.