

Mills County, Iowa
 Horizontal Datum: **NAD 83(2011)** - Vertical Datum: **NAVD 1988**
 Iowa State Plane South Zone (1402)
 Iowa Regional Coordinate System, Zone 6 Council Bluffs
 US Survey Feet
2016

Point Name: **44**

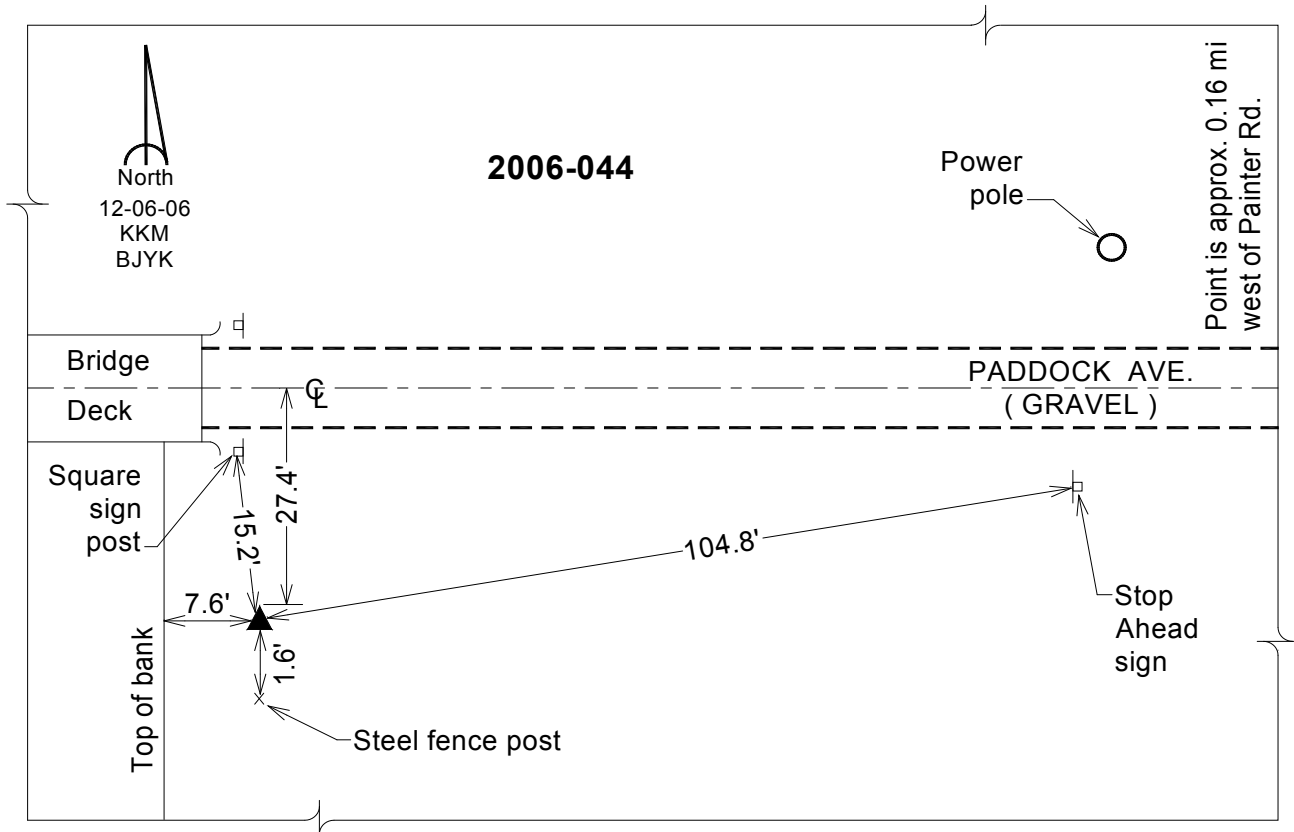
Designation: 2006-044 Mills Co GPS Control Pt.

NAD 83(NA2011) Latitude: **N40°56'42.50542"** Longitude: **W95°47'28.38858"**
 NAVD 88 Ortho Height: **950.972sft** Ellip. Ht: **859.349sft** Geoid12A

Iowa South Zone (1402) Northing: **352679.223sft** Easting: **1007538.906sft**
 Mapping Angle: **-1°30'33"** Combination Scale Factor: **0.999917275**

IaRCS Zone 6 Northing: **6853271.415sft** Easting: **16484007.737sft**
 Mapping Angle: **-00° 02' 17"** Combination Scale Factor: **0.999998127**

Monument Type: Berntsen Top Security Rod Monument with a 2-1/2" dia. domed survey cap and permanent magnet encased in a white PVC pipe with a NGS style aluminum access cover.



This document was prepared by Dan Corbin, Inc. on February 8, 2016 for Mills County, Iowa.