

**Mills County, Iowa**  
 Horizontal Datum: **NAD 83(2011)** - Vertical Datum: **NAVD 1988**  
 Iowa State Plane South Zone (1402)  
 Iowa Regional Coordinate System, Zone 6 Council Bluffs  
 US Survey Feet  
**2016**

Point Name: **46**

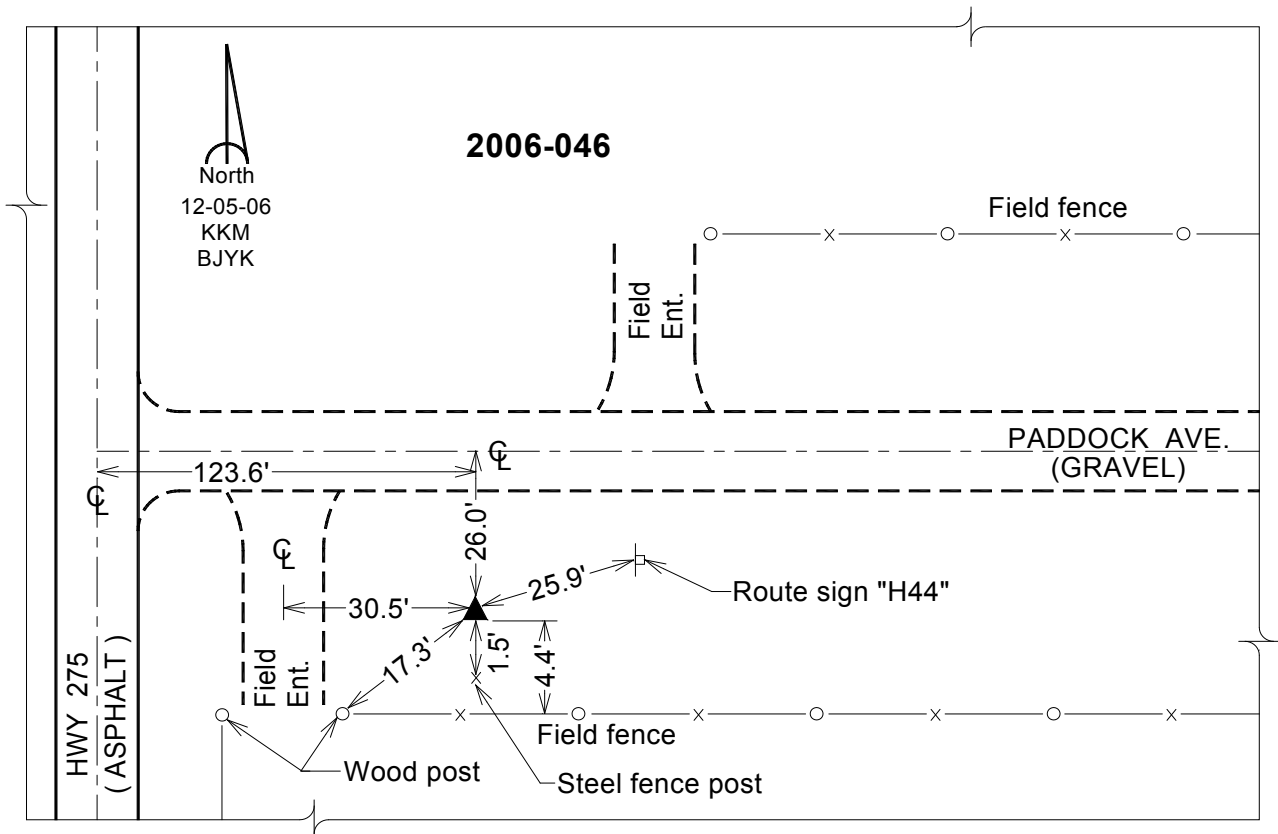
**Designation:** 2006-046 Mills Co GPS Control Pt.

NAD 83(NA2011) Latitude: **N40°56'41.39791"** Longitude: **W95°40'15.12389"**  
 NAVD 88 Ortho Height: **1242.812sft** Ellip. Ht: **1149.607sft** Geoid12A

**Iowa South Zone (1402)** Northing: **351714.506sft** Easting: **1040772.307sft**  
 Mapping Angle: **-1°25'48"** Combination Scale Factor: **0.999903450**

**IaRCS Zone 6** Northing: **6853160.193sft** Easting: **16517257.638sft**  
 Mapping Angle: **00° 02' 27"** Combination Scale Factor: **0.999984272**

**Monument Type:** Berntsen Top Security Rod Monument with a 2-1/2" dia. domed survey cap and permanent magnet encased in a white PVC pipe with a NGS style aluminum access cover.



*This document was prepared by Dan Corbin, Inc. on February 8, 2016 for Mills County, Iowa.*