

Mills County, Iowa

Horizontal Datum: **NAD 83(2011)** - Vertical Datum: **NAVD 1988**

Iowa State Plane South Zone (1402)

Iowa Regional Coordinate System, Zone 6 Council Bluffs

US Survey Feet

2016

Point Name: **47**

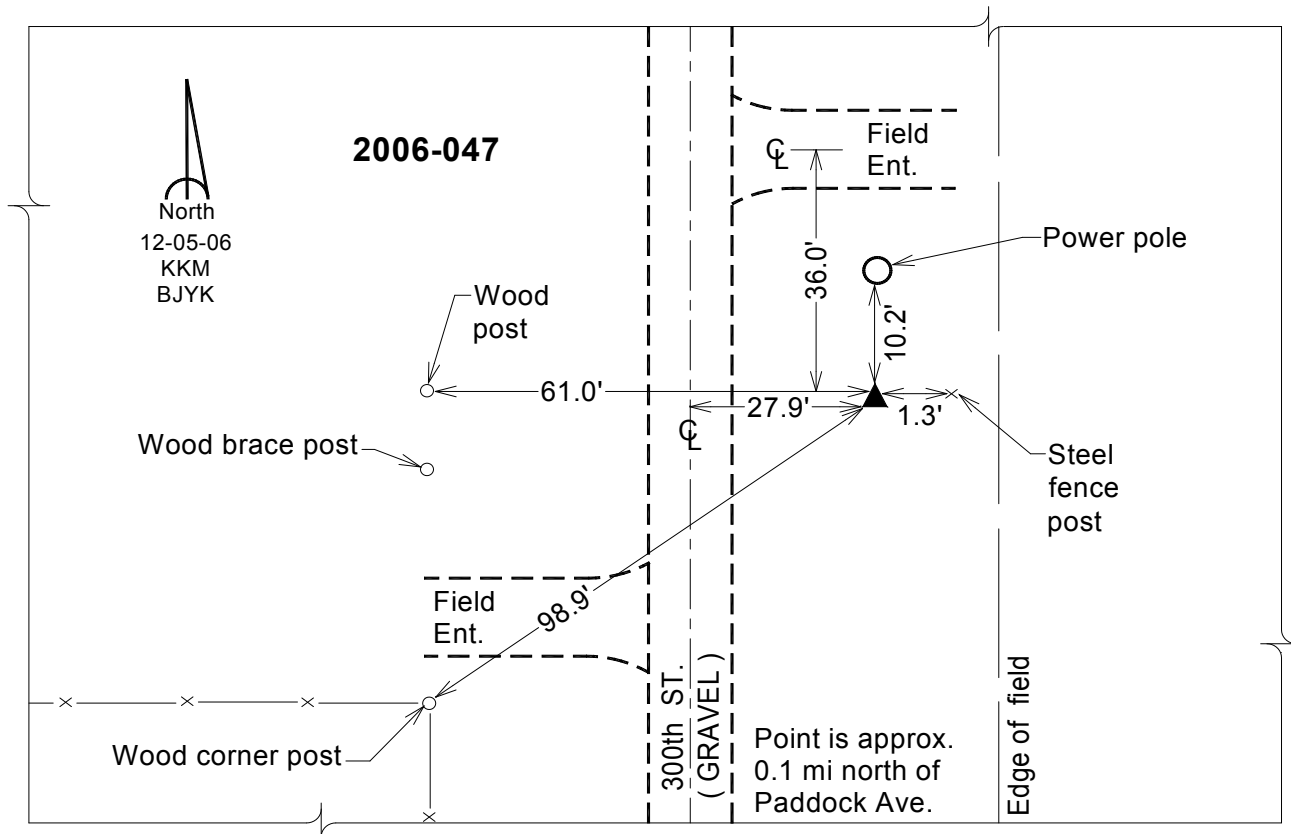
Designation: 2006-047 Mills Co GPS Control Pt.

NAD 83(NA2011) Latitude: **N40°56'47.50546"** Longitude: **W95°36'50.61016"**
NAVD 88 Ortho Height: **1127.719sft** Ellip. Ht: **1033.695sft** Geoid12A

Iowa South Zone (1402) Northing: **351945.917sft** Easting: **1056476.271sft**
Mapping Angle: **-1°23'33"** Combination Scale Factor: **0.999908849**

laRCS Zone 6 Northing: **6853794.658sft** Easting: **16532951.767sft**
Mapping Angle: **00° 04' 41"** Combination Scale Factor: **0.999990724**

Monument Type: Berntsen Top Security Rod Monument with a 2-1/2" dia. domed survey cap and permanent magnet encased in a white PVC pipe with a NGS style aluminum access cover.



This document was prepared by Dan Corbin, Inc. on February 8, 2016 for Mills County, Iowa.