

Mills County, Iowa

Horizontal Datum: **NAD 83(2011)** - Vertical Datum: **NAVD 1988**

Iowa State Plane South Zone (1402)

Iowa Regional Coordinate System, Zone 6 Council Bluffs

US Survey Feet

2016

Point Name: **48**

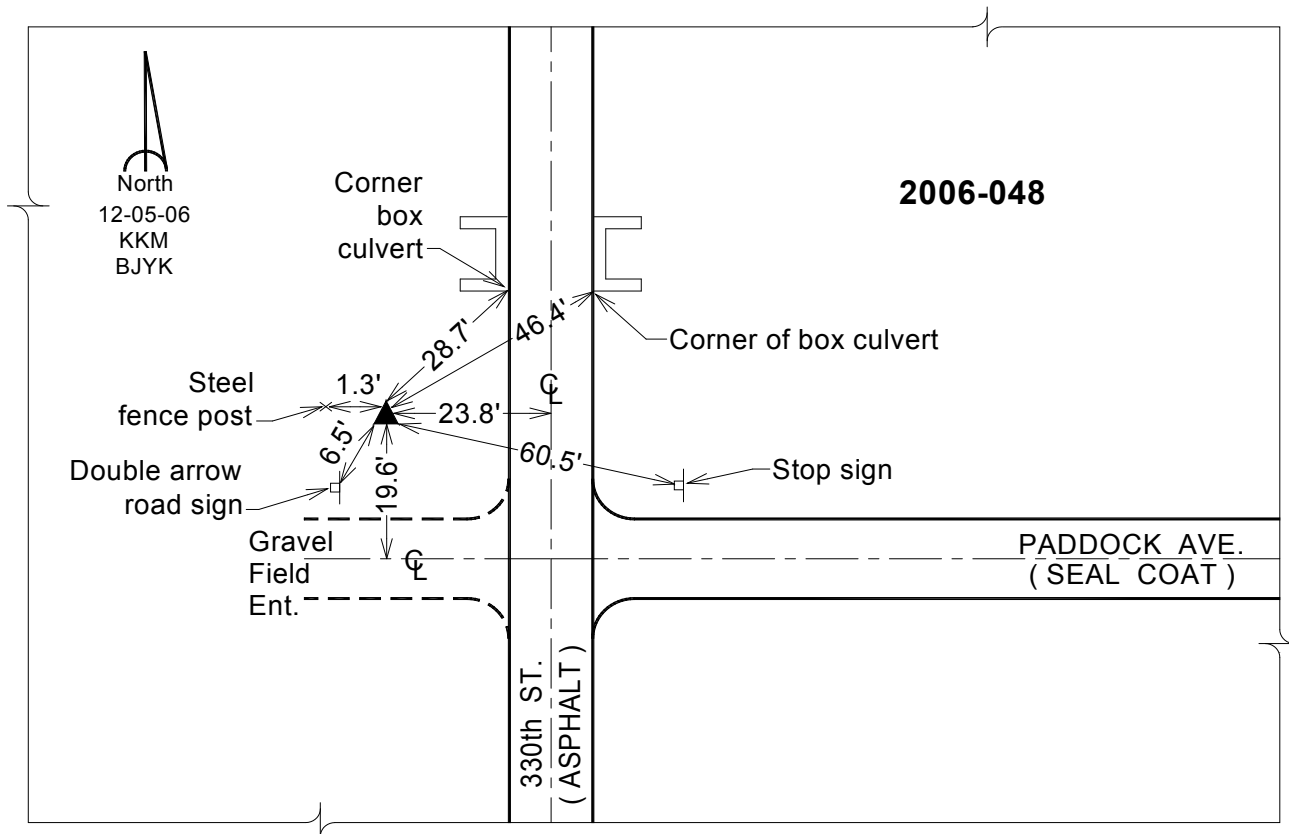
Designation: 2006-048 Mills Co GPS Control Pt.

NAD 83(NA2011) Latitude: **N40°56'42.39724"** Longitude: **W95°33'23.67517"**
NAVD 88 Ortho Height: **973.336sft** Ellip. Ht: **878.430sft** Geoid12A

Iowa South Zone (1402) Northing: **351048.448sft** Easting: **1072338.580sft**
Mapping Angle: **-1°21'17"** Combination Scale Factor: **0.999916367**

laRCS Zone 6 Northing: **6853304.535sft** Easting: **16548833.198sft**
Mapping Angle: **00° 06' 57"** Combination Scale Factor: **0.999999646**

Monument Type: Berntsen Top Security Rod Monument with a 2-1/2" dia. domed survey cap and permanent magnet encased in a white PVC pipe with a NGS style aluminum access cover.



This document was prepared by Dan Corbin, Inc. on February 8, 2016 for Mills County, Iowa.