

Mills County, Iowa
 Horizontal Datum: **NAD 83(2011)** - Vertical Datum: **NAVD 1988**
 Iowa State Plane South Zone (1402)
 Iowa Regional Coordinate System, Zone 6 Council Bluffs
 US Survey Feet
2016

Point Name: **49**

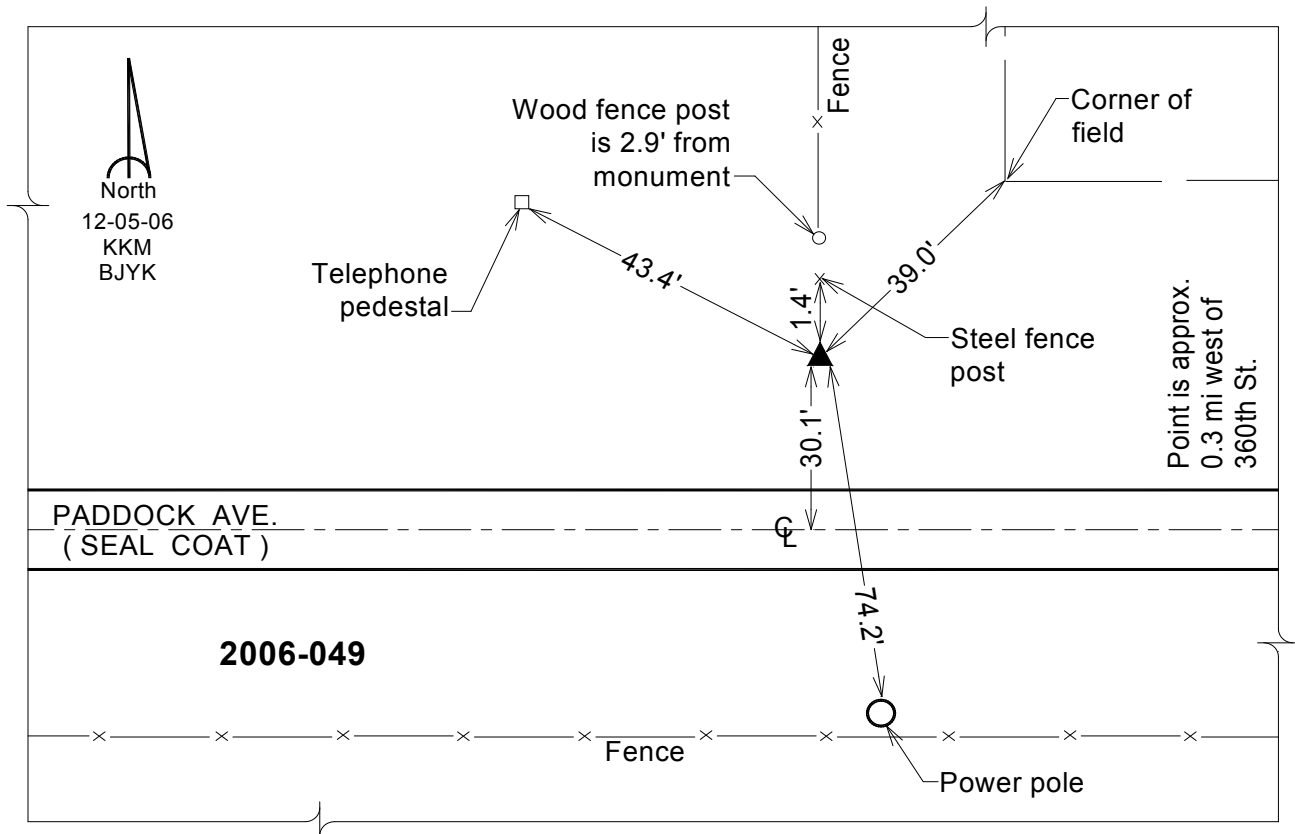
Designation: 2006-049 Mills Co GPS Control Pt.

NAD 83(NA2011) Latitude: **N40°56'42.12505"** Longitude: **W95°30'18.56144"**
 NAVD 88 Ortho Height: **1143.199sft** Ellip. Ht: **1047.643sft** Geoid12A

Iowa South Zone (1402) Northing: **350689.283sft** Easting: **1086539.025sft**
 Mapping Angle: **-1°19'15"** Combination Scale Factor: **0.999908299**

IaRCS Zone 6 Northing: **6853309.884sft** Easting: **16563039.382sft**
 Mapping Angle: **00° 08' 58"** Combination Scale Factor: **0.999993357**

Monument Type: Berntsen Top Security Rod Monument with a 2-1/2" dia. domed survey cap and permanent magnet encased in a white PVC pipe with a NGS style aluminum access cover.



This document was prepared by Dan Corbin, Inc. on February 8, 2016 for Mills County, Iowa.