

Mills County, Iowa
Horizontal Datum: **NAD 83(2011)** - Vertical Datum: **NAVD 1988**
Iowa State Plane South Zone (1402)
Iowa Regional Coordinate System, Zone 6 Council Bluffs
US Survey Feet
2016

Point Name: **50**

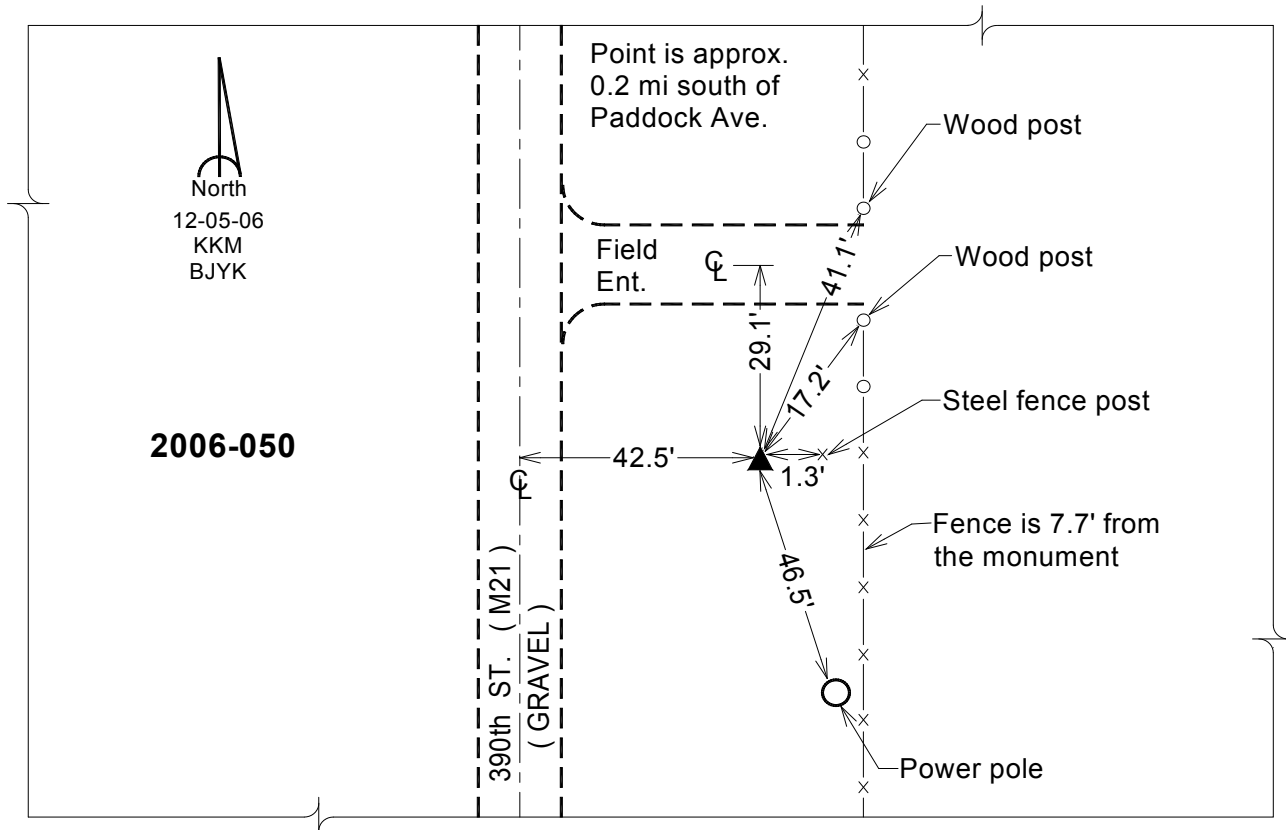
Designation: 2006-050 Mills Co GPS Control Pt.

NAD 83(NA2011) Latitude: **N40°56'30.61807"** Longitude: **W95°26'29.92835"**
NAVD 88 Ortho Height: **1129.169sft** Ellip. Ht: **1032.762sft** Geoid12A

Iowa South Zone (1402) Northing: **349127.032sft** Easting: **1104053.007sft**
Mapping Angle: **-1°16'44"** Combination Scale Factor: **0.999909259**

IaRCS Zone 6 Northing: **6852197.413sft** Easting: **16580589.198sft**
Mapping Angle: **00° 11' 28"** Combination Scale Factor: **0.999996950**

Monument Type: Berntsen Top Security Rod Monument with a 2-1/2" dia. domed survey cap and permanent magnet encased in a white PVC pipe with a NGS style aluminum access cover.



This document was prepared by Dan Corbin, Inc. on February 8, 2016 for Mills County, Iowa.