

Mills County, Iowa
Horizontal Datum: **NAD 83(2011)** - Vertical Datum: **NAVD 1988**
Iowa State Plane South Zone (1402)
Iowa Regional Coordinate System, Zone 6 Council Bluffs
US Survey Feet
2016

Point Name: **51**

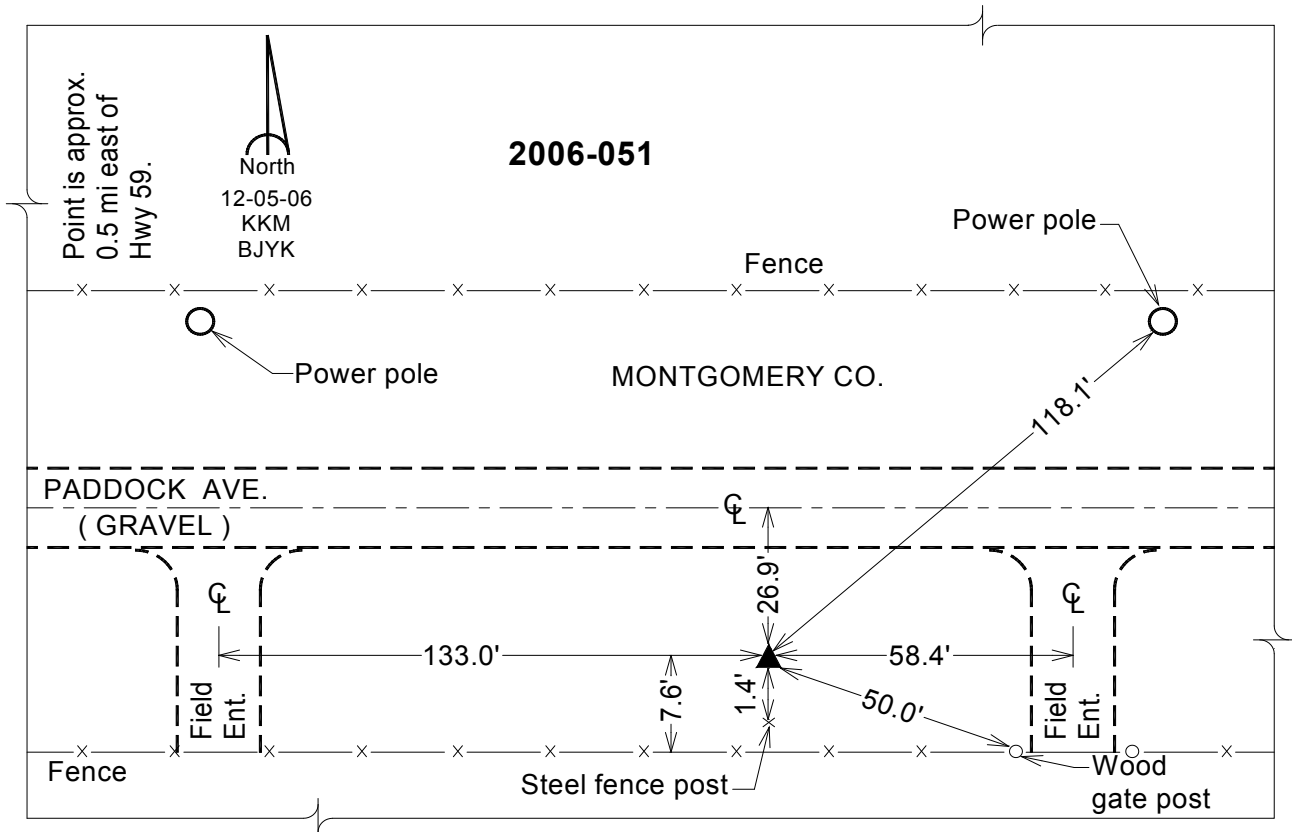
Designation: 2006-051 Mills Co GPS Control Pt.

NAD 83(NA2011) Latitude: **N40°56'41.52433"** Longitude: **W95°23'03.04503"**
NAVD 88 Ortho Height: **1120.795sft** Ellip. Ht: **1023.780sft** Geoid12A

Iowa South Zone (1402) Northing: **349881.399sft** Easting: **1119949.333sft**
Mapping Angle: **-1°14'28"** Combination Scale Factor: **0.999909451**

laRCS Zone 6 Northing: **6853359.437sft** Easting: **16596462.362sft**
Mapping Angle: **00° 13' 44"** Combination Scale Factor: **1.000000593**

Monument Type: Berntsen Top Security Rod Monument with a 2-1/2" dia. domed survey cap and permanent magnet encased in a white PVC pipe with a NGS style aluminum access cover.



This document was prepared by Dan Corbin, Inc. on February 8, 2016 for Mills County, Iowa.