

Mills County, Iowa
Horizontal Datum: **NAD 83(2011)** - Vertical Datum: **NAVD 1988**
Iowa State Plane South Zone (1402)
Iowa Regional Coordinate System, Zone 6 Council Bluffs
US Survey Feet
2016

Point Name: **52**

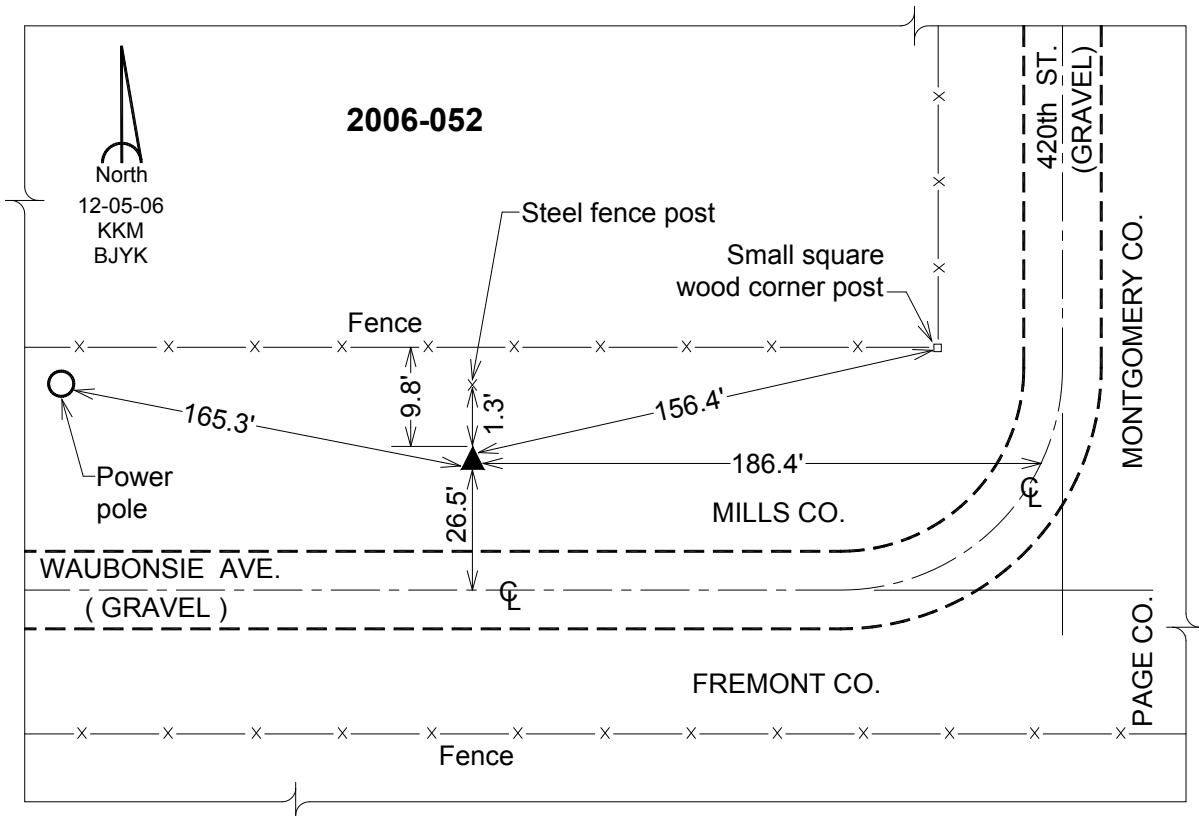
Designation: 2006-052 Mills Co GPS Control Pt.

NAD 83(NA2011) Latitude: **N40°54'05.59469"** Longitude: **W95°23'07.38975"**
NAVD 88 Ortho Height: **1021.752sft** Ellip. Ht: **923.726sft** Geoid12A

Iowa South Zone (1402) Northing: **334111.819sft** Easting: **1119273.991sft**
Mapping Angle: **-1°14'31"** Combination Scale Factor: **0.999917866**

laRCS Zone 6 Northing: **6837576.310sft** Easting: **16596191.716sft**
Mapping Angle: **00° 13' 40"** Combination Scale Factor: **1.000005325**

Monument Type: Berntsen Top Security Rod Monument with a 2-1/2" dia. domed survey cap and permanent magnet encased in a white PVC pipe with a NGS style aluminum access cover.



This document was prepared by Dan Corbin, Inc. on February 8, 2016 for Mills County, Iowa.