

**Mills County, Iowa**  
Horizontal Datum: **NAD 83(2011)** - Vertical Datum: **NAVD 1988**  
Iowa State Plane South Zone (1402)  
Iowa Regional Coordinate System, Zone 6 Council Bluffs  
US Survey Feet  
**2016**

Point Name: **54**

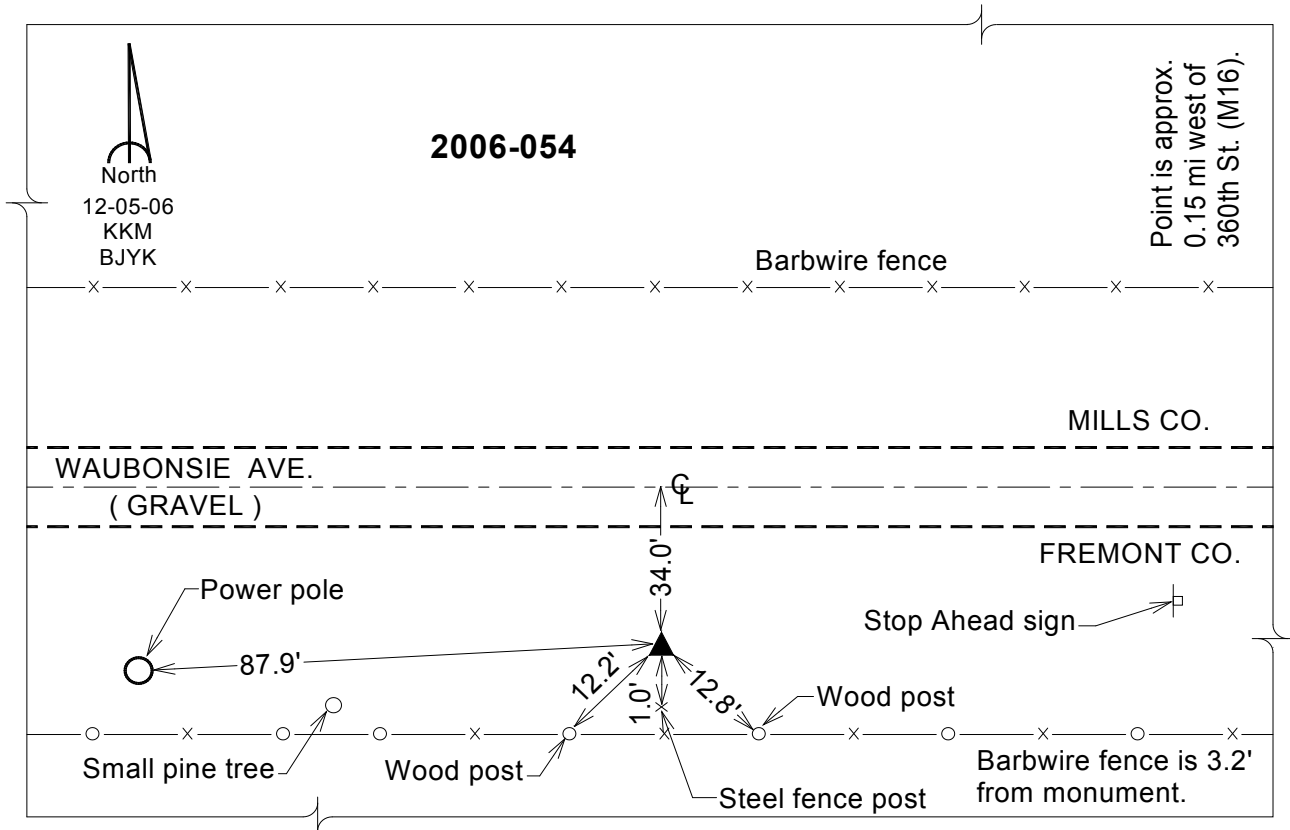
**Designation:** 2006-054 Mills Co GPS Control Pt.

NAD 83(NA2011) Latitude: **N40°54'05.47272"** Longitude: **W95°30'09.47598"**  
NAVD 88 Ortho Height: **1077.709sft** Ellip. Ht: **981.030sft** Geoid**12A**

**Iowa South Zone (1402)** Northing: **334823.776sft** Easting: **1086871.056sft**  
Mapping Angle: **-1°19'09"** Combination Scale Factor: **0.999915135**

**IaRCS Zone 6** Northing: **6837456.795sft** Easting: **16563778.443sft**  
Mapping Angle: **00° 09' 04"** Combination Scale Factor: **0.999996655**

**Monument Type:** Berntsen Top Security Rod Monument with a 2-1/2" dia. domed survey cap and permanent magnet encased in a white PVC pipe with a NGS style aluminum access cover.



*This document was prepared by Dan Corbin, Inc. on February 8, 2016 for Mills County, Iowa.*