

Mills County, Iowa
 Horizontal Datum: **NAD 83(2011)** - Vertical Datum: **NAVD 1988**
 Iowa State Plane South Zone (1402)
 Iowa Regional Coordinate System, Zone 6 Council Bluffs
 US Survey Feet
2016

Point Name: **55**

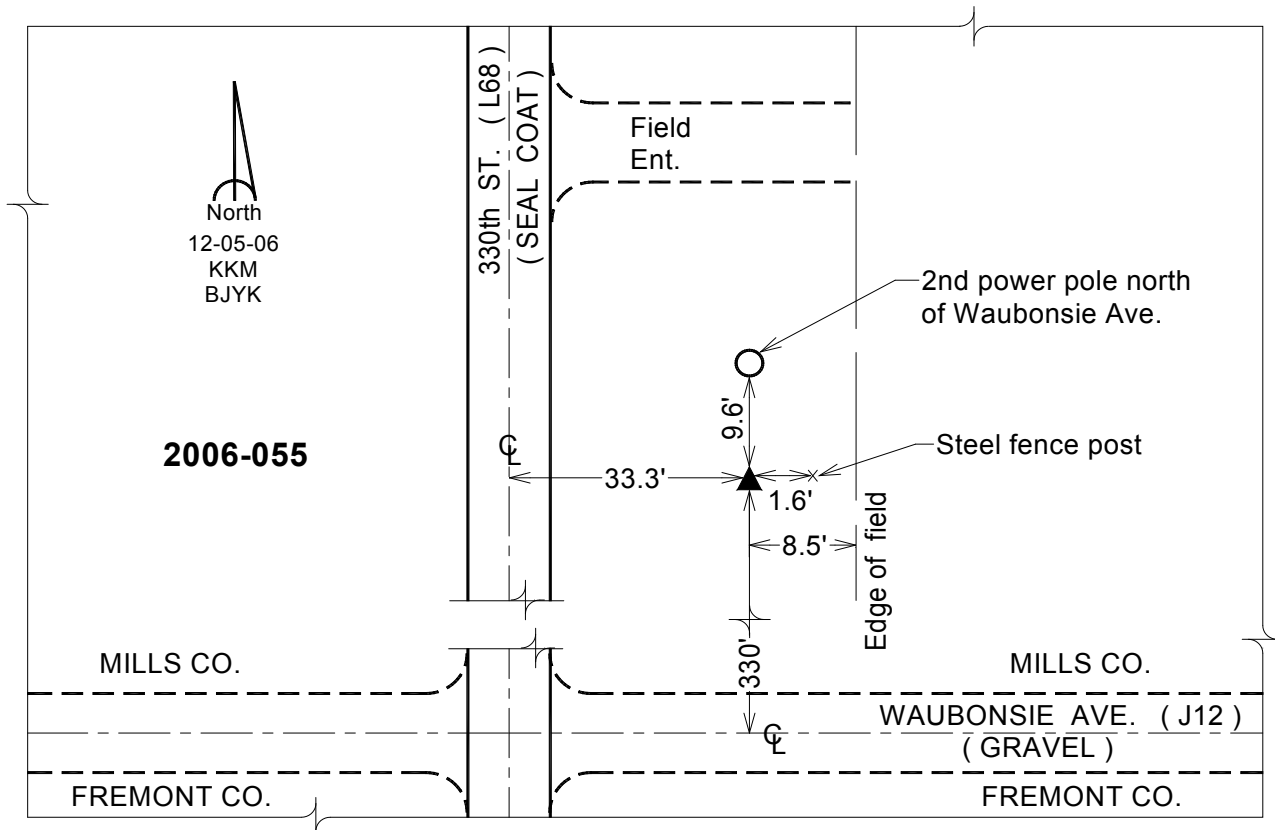
Designation: 2006-055 Mills Co GPS Control Pt.

NAD 83(NA2011) Latitude: **N40°54'09.06550"** Longitude: **W95°33'22.38855"**
 NAVD 88 Ortho Height: **977.606sft** Ellip. Ht: **881.621sft** Geoid12A

Iowa South Zone (1402) Northing: **335532.853sft** Easting: **1072070.492sft**
 Mapping Angle: **-1°21'16"** Combination Scale Factor: **0.999919788**

laRCS Zone 6 Northing: **6837785.902sft** Easting: **16548963.361sft**
 Mapping Angle: **00° 06' 58"** Combination Scale Factor: **0.999999507**

Monument Type: Berntsen Top Security Rod Monument with a 2-1/2" dia. domed survey cap and permanent magnet encased in a white PVC pipe with a NGS style aluminum access cover.



This document was prepared by Dan Corbin, Inc. on February 8, 2016 for Mills County, Iowa.