

Mills County, Iowa
 Horizontal Datum: **NAD 83(2011)** - Vertical Datum: **NAVD 1988**
 Iowa State Plane South Zone (1402)
 Iowa Regional Coordinate System, Zone 6 Council Bluffs
 US Survey Feet
2016

Point Name: **56**

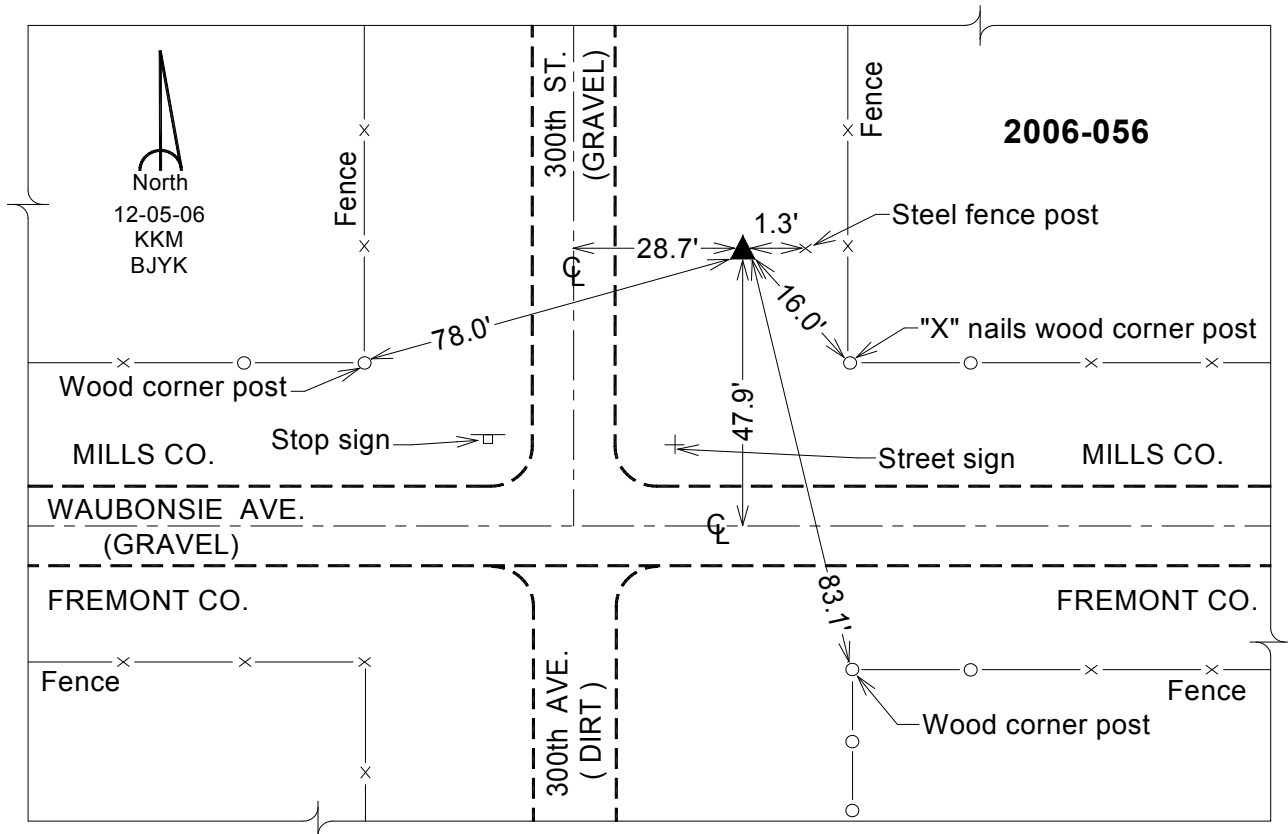
Designation: 2006-056 Mills Co GPS Control Pt.

NAD 83(NA2011) Latitude: **N40°54'06.24998"** Longitude: **W95°36'50.91174"**
 NAVD 88 Ortho Height: **1097.625sft** Ellip. Ht: **1002.481sft** Geoid12A

Iowa South Zone (1402) Northing: **335631.797sft** Easting: **1056056.525sft**
 Mapping Angle: **-1°23'33"** Combination Scale Factor: **0.999914092**

IaRCS Zone 6 Northing: **6837473.830sft** Easting: **16532950.864sft**
 Mapping Angle: **00° 04' 41"** Combination Scale Factor: **0.999992219**

Monument Type: Berntsen Top Security Rod Monument with a 2-1/2" dia. domed survey cap and permanent magnet encased in a white PVC pipe with a NGS style aluminum access cover.



This document was prepared by Dan Corbin, Inc. on February 8, 2016 for Mills County, Iowa.