

**Mills County, Iowa**  
 Horizontal Datum: **NAD 83(2011)** - Vertical Datum: **NAVD 1988**  
 Iowa State Plane South Zone (1402)  
 Iowa Regional Coordinate System, Zone 6 Council Bluffs  
 US Survey Feet  
**2016**

Point Name: **57**

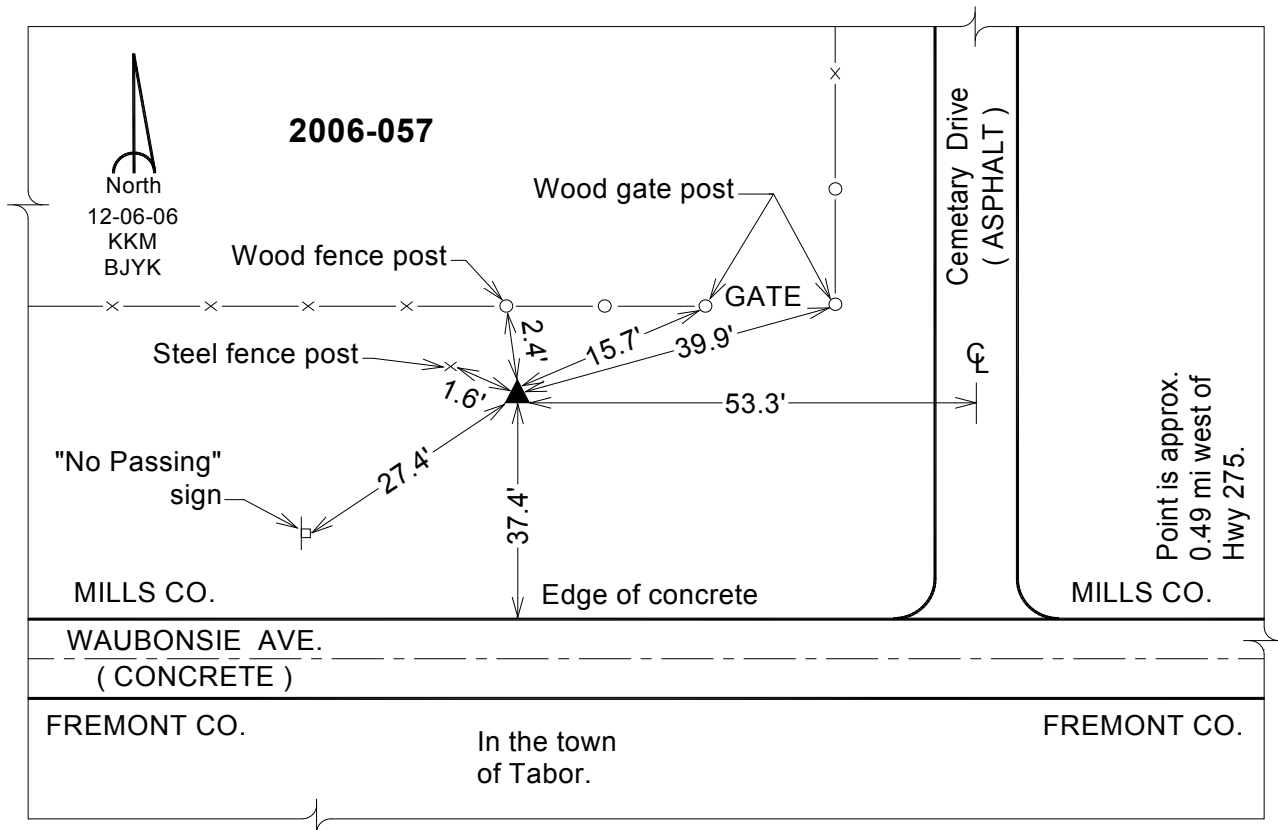
**Designation:** 2006-057 Mills Co GPS Control Pt.

NAD 83(NA2011) Latitude: **N40°54'05.66995"** Longitude: **W95°40'51.81188"**  
 NAVD 88 Ortho Height: **1229.067sft** Ellip. Ht: **1134.977sft** Geoid**12A**

**Iowa South Zone (1402)** Northing: **336029.781sft** Easting: **1037562.737sft**  
 Mapping Angle: **-1°26'12"** Combination Scale Factor: **0.999907785**

**IaRCS Zone 6** Northing: **6837397.001sft** Easting: **16514451.516sft**  
 Mapping Angle: **00° 02' 03"** Combination Scale Factor: **0.999984870**

**Monument Type:** Berntsen Top Security Rod Monument with a 2-1/2" dia. domed survey cap and permanent magnet encased in a white PVC pipe with a NGS style aluminum access cover.



*This document was prepared by Dan Corbin, Inc. on February 8, 2016 for Mills County, Iowa.*