

Mills County, Iowa
 Horizontal Datum: **NAD 83(2011)** - Vertical Datum: **NAVD 1988**
 Iowa State Plane South Zone (1402)
 Iowa Regional Coordinate System, Zone 6 Council Bluffs
 US Survey Feet
2016

Point Name: **58**

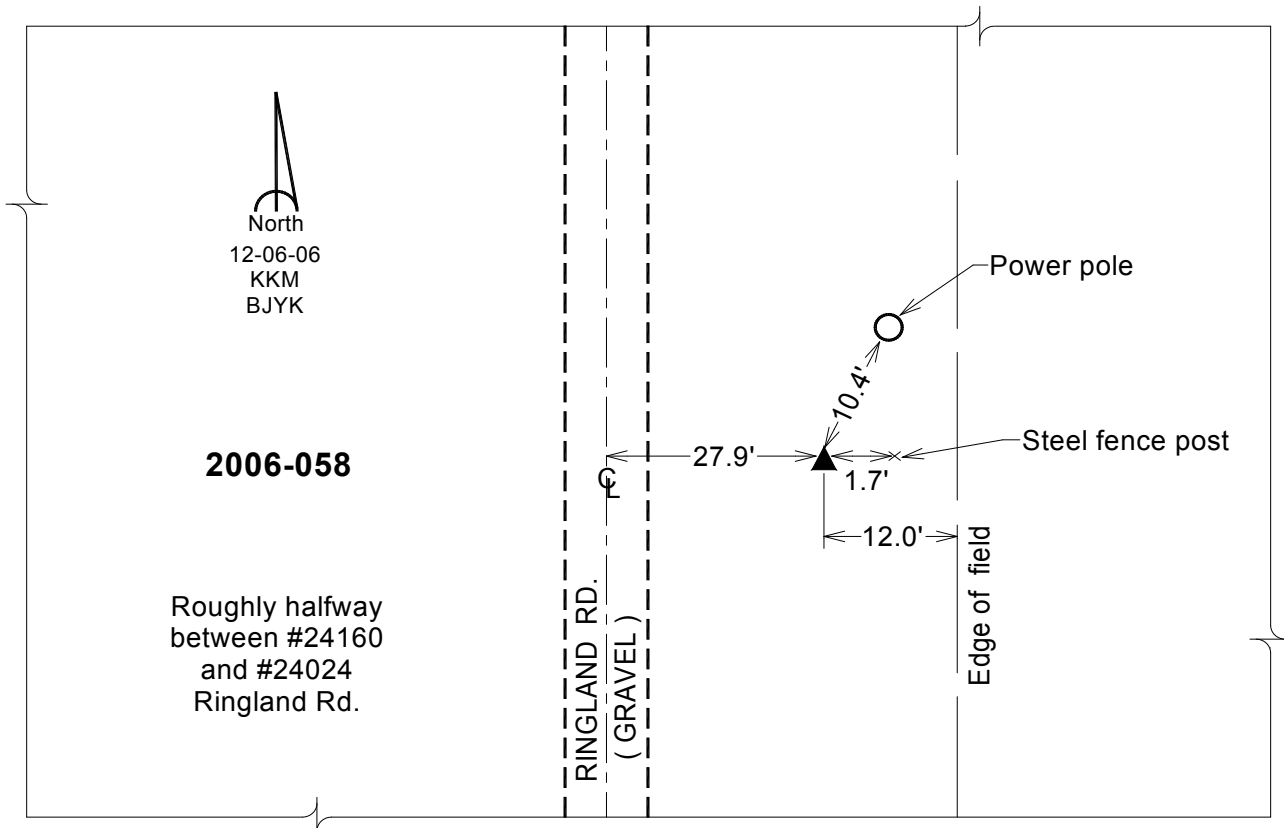
Designation: 2006-058 Mills Co GPS Control Pt.

NAD 83(NA2011) Latitude: **N40°54'10.00604"** Longitude: **W95°43'08.20592"**
 NAVD 88 Ortho Height: **1159.758sft** Ellip. Ht: **1066.246sft** Geoid12A

Iowa South Zone (1402) Northing: **336733.327sft** Easting: **1027103.991sft**
 Mapping Angle: **-1°27'42"** Combination Scale Factor: **0.999910955**

IaRCS Zone 6 Northing: **6837831.869sft** Easting: **16503977.347sft**
 Mapping Angle: **00° 00' 34"** Combination Scale Factor: **0.999987942**

Monument Type: Berntsen Top Security Rod Monument with a 2-1/2" dia. domed survey cap and permanent magnet encased in a white PVC pipe with a NGS style aluminum access cover.



This document was prepared by Dan Corbin, Inc. on February 8, 2016 for Mills County, Iowa.