

Mills County, Iowa
Horizontal Datum: **NAD 83(2011)** - Vertical Datum: **NAVD 1988**
Iowa State Plane South Zone (1402)
Iowa Regional Coordinate System, Zone 6 Council Bluffs
US Survey Feet
2016

Point Name: **59**

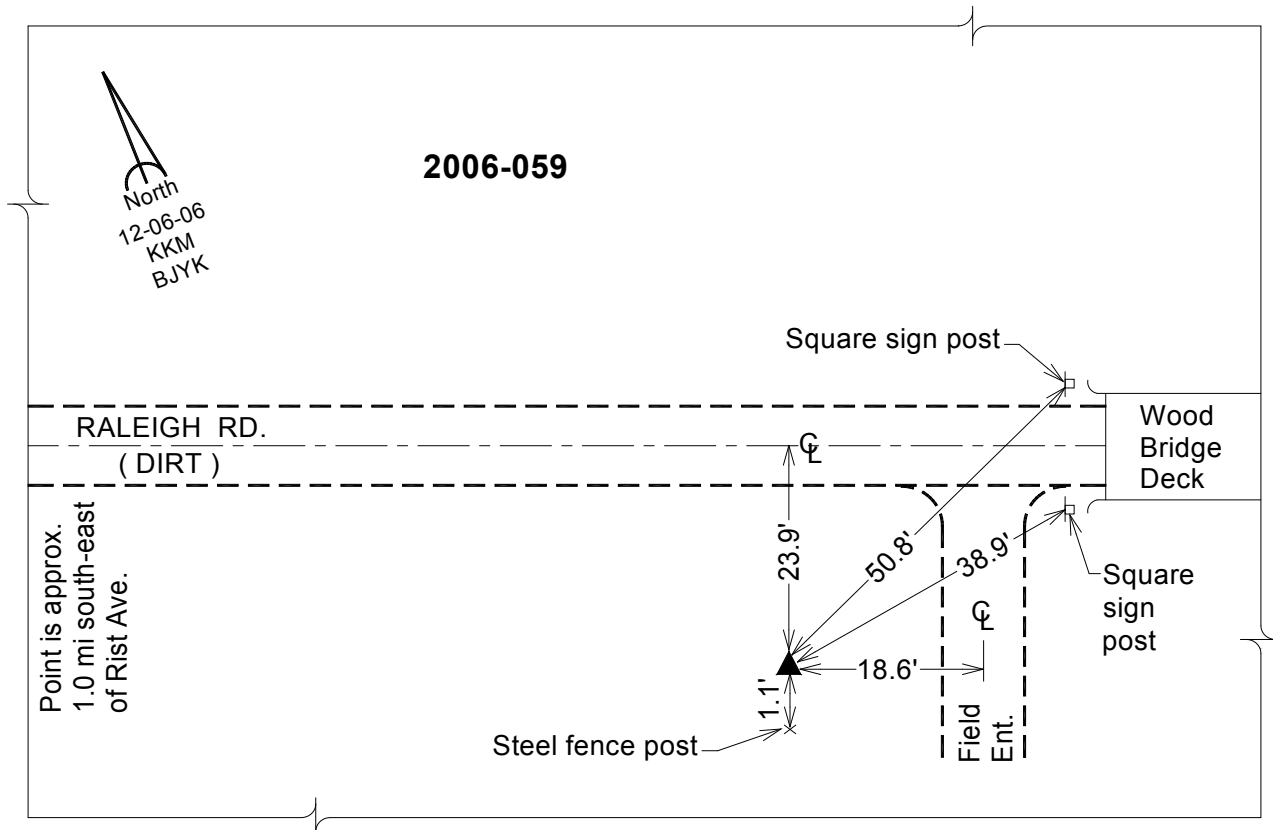
Designation: 2006-059 Mills Co GPS Control Pt.

NAD 83(NA2011) Latitude: **N40°54'13.29390"** Longitude: **W95°45'25.78805"**
NAVD 88 Ortho Height: **953.998sft** Ellip. Ht: **861.060sft** Geoid12A

Iowa South Zone (1402) Northing: **337337.744sft** Easting: **1016551.794sft**
Mapping Angle: **-1°29'12"** Combination Scale Factor: **0.999920663**

IaRCS Zone 6 Northing: **6838165.204sft** Easting: **16493412.295sft**
Mapping Angle: **-00° 00' 56"** Combination Scale Factor: **0.999997802**

Monument Type: Berntsen Top Security Rod Monument with a 2-1/2" dia. domed survey cap and permanent magnet encased in a white PVC pipe with a NGS style aluminum access cover.



This document was prepared by Dan Corbin, Inc. on February 8, 2016 for Mills County, Iowa.