

Mills County, Iowa
 Horizontal Datum: **NAD 83(2011)** - Vertical Datum: **NAVD 1988**
 Iowa State Plane South Zone (1402)
 Iowa Regional Coordinate System, Zone 6 Council Bluffs
 US Survey Feet
2016

Point Name: **61**

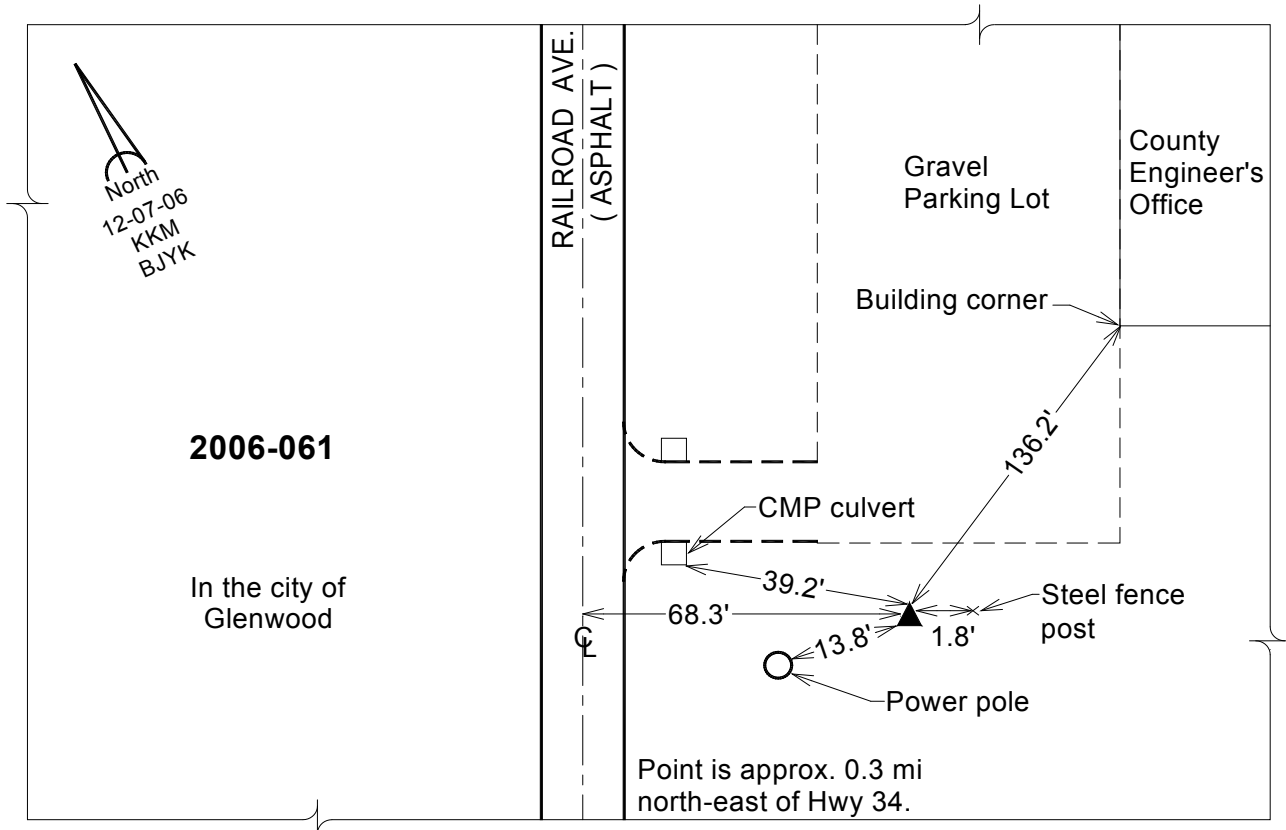
Designation: 2006-061 Mills Co GPS Control Pt.

NAD 83(NA2011) Latitude: **N41°02'08.97734"** Longitude: **W95°44'44.07099"**
 NAVD 88 Ortho Height: **986.929sft** Ellip. Ht: **895.956sft** Geoid**12A**

Iowa South Zone (1402) Northing: **385379.508sft** Easting: **1020996.621sft**
 Mapping Angle: **-1°28'45"** Combination Scale Factor: **0.999909749**

laRCS Zone 6 Northing: **6886309.212sft** Easting: **16496622.512sft**
 Mapping Angle: **-00° 00' 29"** Combination Scale Factor: **0.999996095**

Monument Type: Berntsen Top Security Rod Monument with a 2-1/2" dia. domed survey cap and permanent magnet encased in a white PVC pipe with a NGS style aluminum access cover.



This document was prepared by Dan Corbin, Inc. on February 8, 2016 for Mills County, Iowa.