

Mills County, Iowa
 Horizontal Datum: **NAD 83(2011)** - Vertical Datum: **NAVD 1988**
 Iowa State Plane South Zone (1402)
 Iowa Regional Coordinate System, Zone 6 Council Bluffs
 US Survey Feet
2016

Point Name: **62**

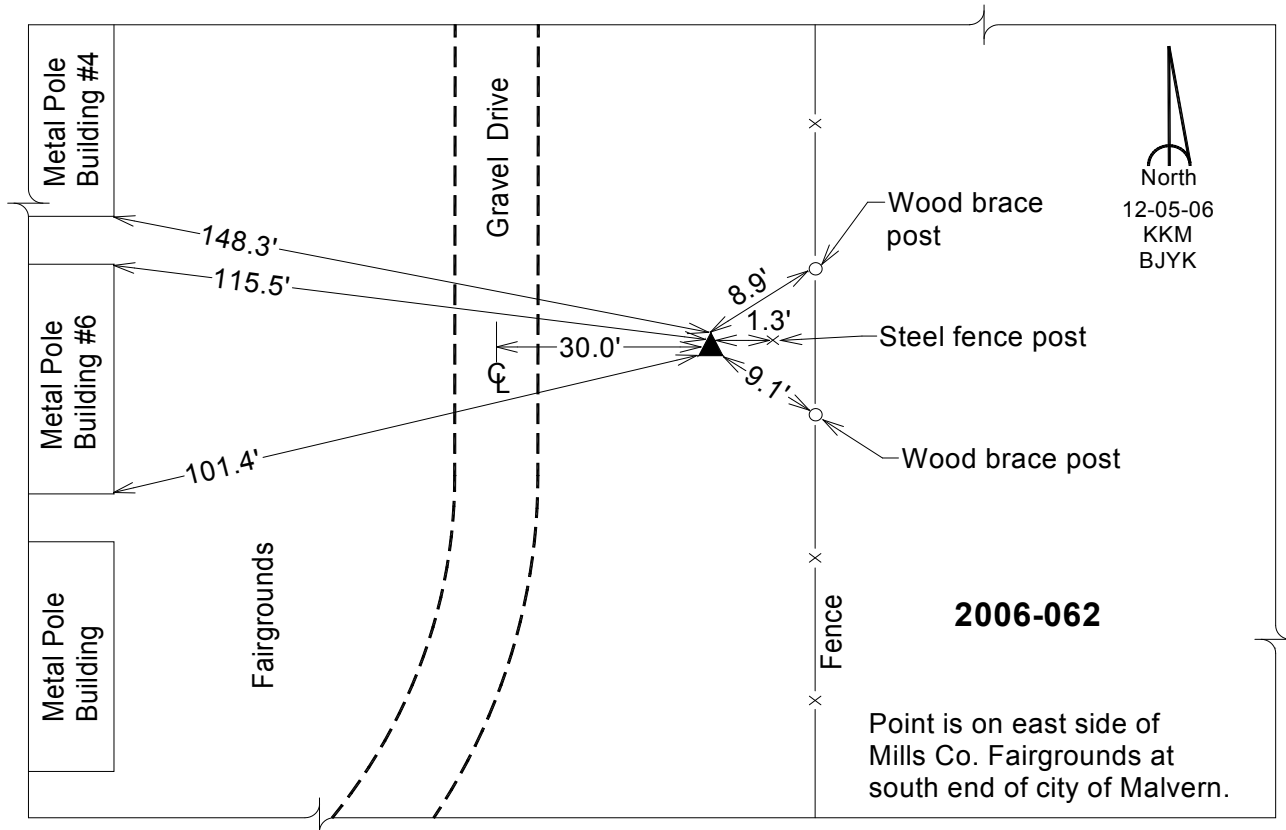
Designation: 2006-062 Mills Co GPS Control Pt.

NAD 83(NA2011) Latitude: **N40°59'45.13877"** Longitude: **W95°34'49.42546"**
 NAVD 88 Ortho Height: **1051.339sft** Ellip. Ht: **957.967sft** Geoid12A

Iowa South Zone (1402) Northing: **369693.655sft** Easting: **1066202.561sft**
 Mapping Angle: **-1°22'13"** Combination Scale Factor: **0.999909030**

laRCS Zone 6 Northing: **6871787.696sft** Easting: **16542220.129sft**
 Mapping Angle: **00° 06' 01"** Combination Scale Factor: **0.999995148**

Monument Type: Berntsen Top Security Rod Monument with a 2-1/2" dia. domed survey cap and permanent magnet encased in a white PVC pipe with a NGS style aluminum access cover.



This document was prepared by Dan Corbin, Inc. on February 8, 2016 for Mills County, Iowa.