

**Mills County, Iowa**

Horizontal Datum: **NAD 83(2011)** - Vertical Datum: **NAVD 1988**

Iowa State Plane South Zone (1402)

Iowa Regional Coordinate System, Zone 6 Council Bluffs

US Survey Feet

**2016**

Point Name: **63 (Replaces 60)**

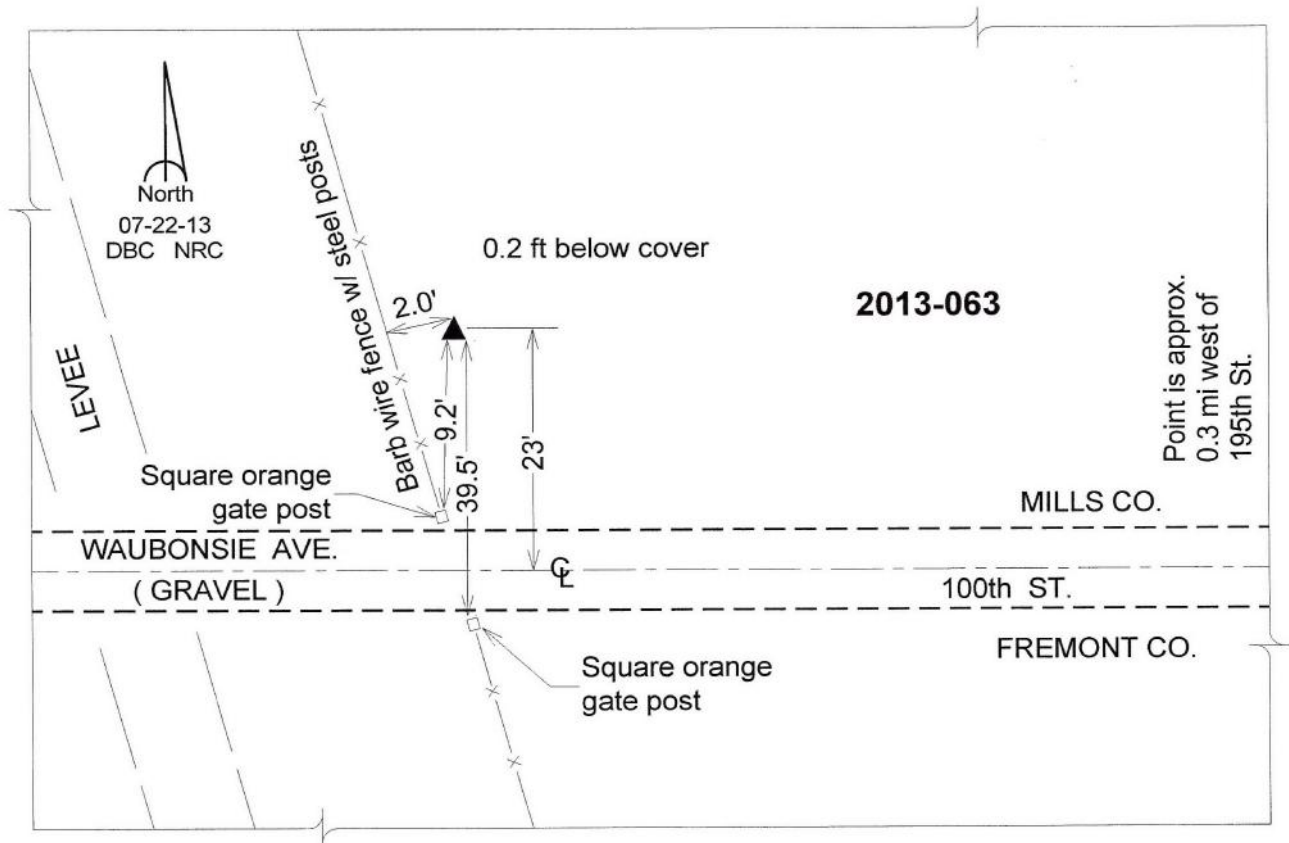
**Designation:** 2013-063 Mills Co GPS Control Pt.

NAD 83(NA2011) Latitude: **N40°54'05.77268"** Longitude: **W95°48'32.89632"**  
NAVD 88 Ortho Height: **944.685sft** Ellip. Ht: **852.453sft** Geoid12A

Iowa South Zone (1402) Northing: **336953.911sft** Easting: **1002169.517sft**  
Mapping Angle: **-1°31'16"** Combination Scale Factor: **0.999921262**

IaRCS Zone 6 Northing: **6837412.159sft** Easting: **16479043.503sft**  
Mapping Angle: **-00° 02' 59"** Combination Scale Factor: **0.999998667**

**Monument Type:** Berntsen Top Security Rod Monument with a 2-1/2" dia. domed survey cap and permanent magnet encased in a white PVC pipe with a NGS style aluminum access cover.



*This document was prepared by Dan Corbin, Inc. on February 8, 2016 for Mills County, Iowa.*