

Mills County, Iowa
Horizontal Datum: **NAD 83(2011)** - Vertical Datum: **NAVD 1988**
Iowa State Plane South Zone (1402)
Iowa Regional Coordinate System, Zone 6 Council Bluffs
US Survey Feet
2016

Point Name: **64 (Replaces 43)**

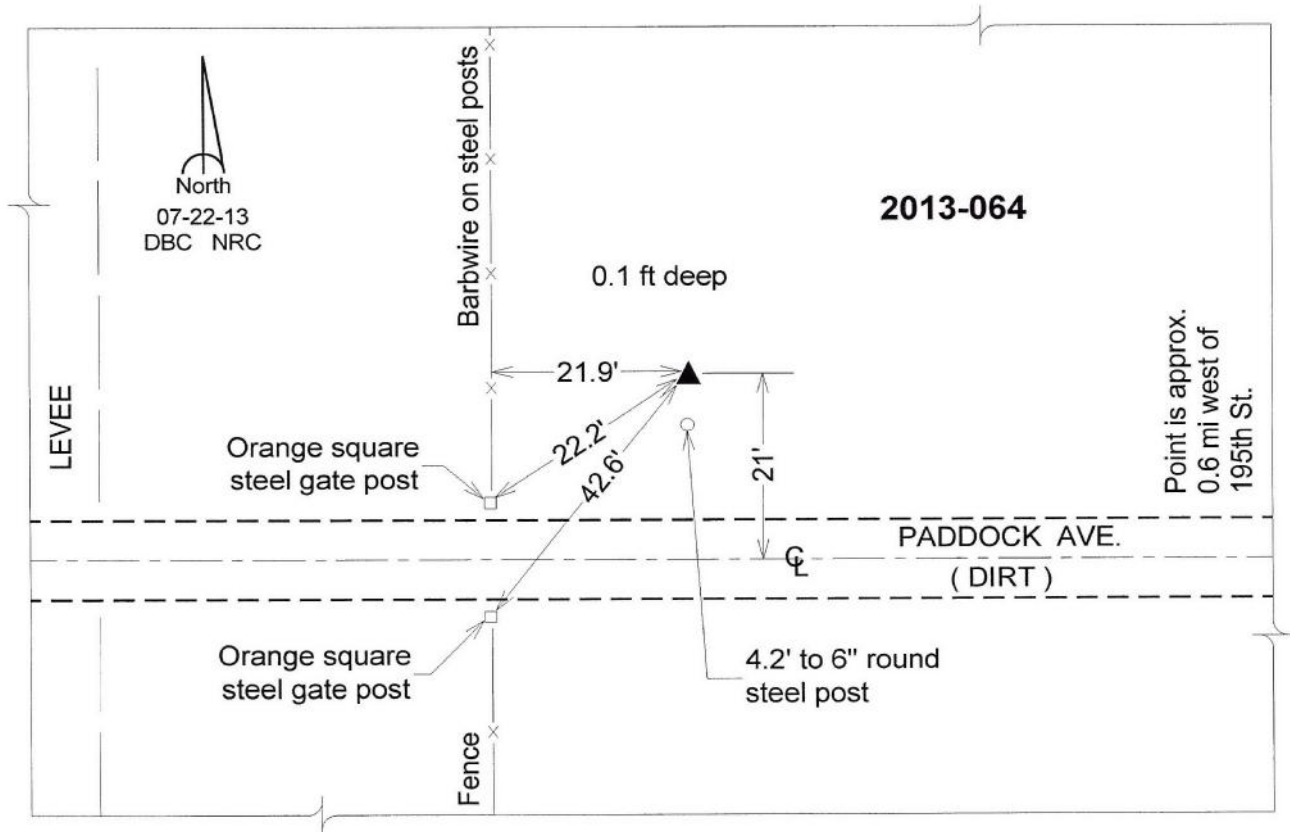
Designation: 2013-064 Mills Co GPS Control Pt.

NAD 83(NA2011) Latitude: **N40°56'42.39684"** Longitude: **W95°48'52.54960"**
NAVD 88 Ortho Height: **949.387sft** Ellip. Ht: **858.046sft** Geoid12A

Iowa South Zone (1402) Northing: **352839.202sft** Easting: **1001082.670sft**
Mapping Angle: **-1°31'29"** Combination Scale Factor: **0.999917340**

laRCS Zone 6 Northing: **6853265.565sft** Easting: **16477548.998sft**
Mapping Angle: **-00° 03' 12"** Combination Scale Factor: **0.999998473**

Monument Type: Berntsen Top Security Rod Monument with a 2-1/2" dia. domed survey cap and permanent magnet encased in a white PVC pipe with a NGS style aluminum access cover.



This document was prepared by Dan Corbin, Inc. on February 8, 2016 for Mills County, Iowa.