

Mills County, Iowa
 Horizontal Datum: **NAD 83(2011)** - Vertical Datum: **NAVD 1988**
 Iowa State Plane South Zone (1402)
 Iowa Regional Coordinate System, Zone 6 Council Bluffs
 US Survey Feet
2016

Point Name: **65 (Replaces 42)**

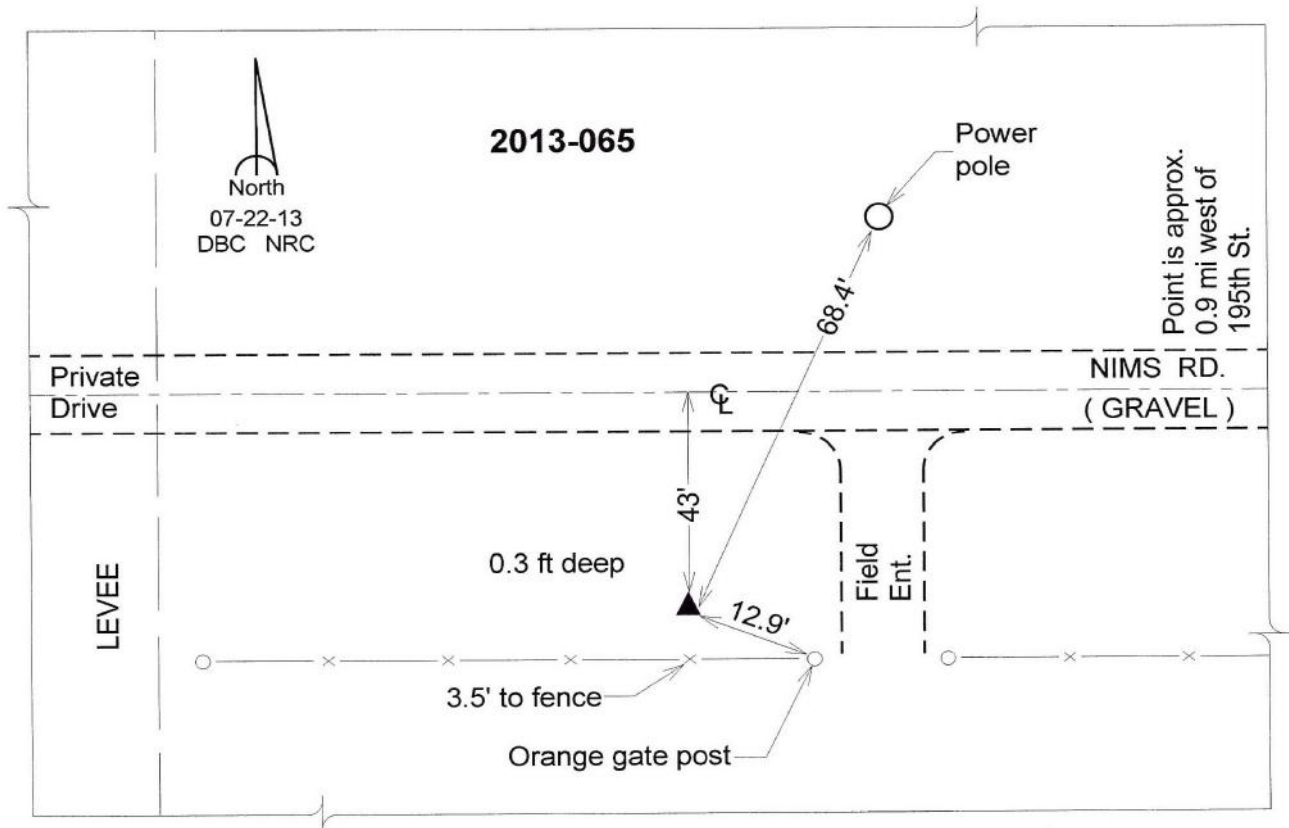
Designation: 2013-065 Mills Co GPS Control Pt.

NAD 83(NA2011) Latitude: **N40°58'00.24438"** Longitude: **W95°49'30.94102"**
 NAVD 88 Ortho Height: **954.421sft** Ellip. Ht: **863.513sft** Geoid12A

Iowa South Zone (1402) Northing: **360793.362sft** Easting: **998348.284sft**
 Mapping Angle: **-1°31'54"** Combination Scale Factor: **0.999915475**

laRCS Zone 6 Northing: **6861147.537sft** Easting: **16474611.028sft**
 Mapping Angle: **-00° 03' 37"** Combination Scale Factor: **0.999998372**

Monument Type: Berntsen Top Security Rod Monument with a 2-1/2" dia. domed survey cap and permanent magnet encased in a white PVC pipe with a NGS style aluminum access cover.



This document was prepared by Dan Corbin, Inc. on February 8, 2016 for Mills County, Iowa.