

Mills County, Iowa
 Horizontal Datum: **NAD 83(2011)** - Vertical Datum: **NAVD 1988**
 Iowa State Plane South Zone (1402)
 Iowa Regional Coordinate System, Zone 6 Council Bluffs
 US Survey Feet
2016

Point Name: **66 (Replaces 24)**

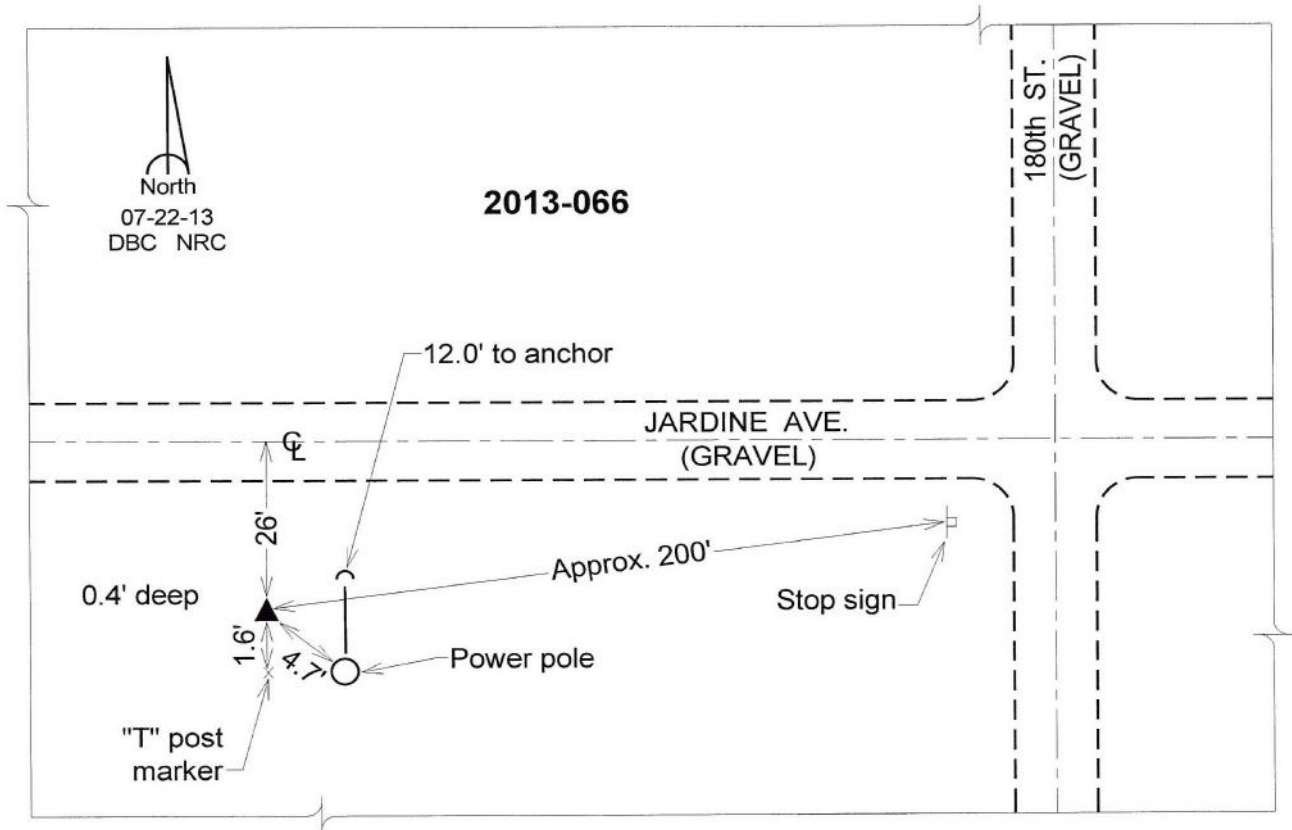
Designation: 2013-066 Mills Co GPS Control Pt.

NAD 83(NA2011) Latitude: **N41°01'49.99462"** Longitude: **W95°50'34.59410"**
 NAVD 88 Ortho Height: **953.659sft** Ellip. Ht: **863.517sft** Geoid12A

Iowa South Zone (1402) Northing: **384167.478sft** Easting: **994093.357sft**
 Mapping Angle: **-1°32'36"** Combination Scale Factor: **0.999911565**

laRCS Zone 6 Northing: **6884406.674sft** Easting: **16469756.906sft**
 Mapping Angle: **-00° 04' 19"** Combination Scale Factor: **0.999998681**

Monument Type: Berntsen Top Security Rod Monument with a 2-1/2" dia. domed survey cap and permanent magnet encased in a white PVC pipe with a NGS style aluminum access cover.



This document was prepared by Dan Corbin, Inc. on February 8, 2016 for Mills County, Iowa.