

Mills County, Iowa
Horizontal Datum: **NAD 83(2011)** - Vertical Datum: **NAVD 1988**
Iowa State Plane South Zone (1402)
Iowa Regional Coordinate System, Zone 6 Council Bluffs
US Survey Feet
2016

Point Name: **1001**

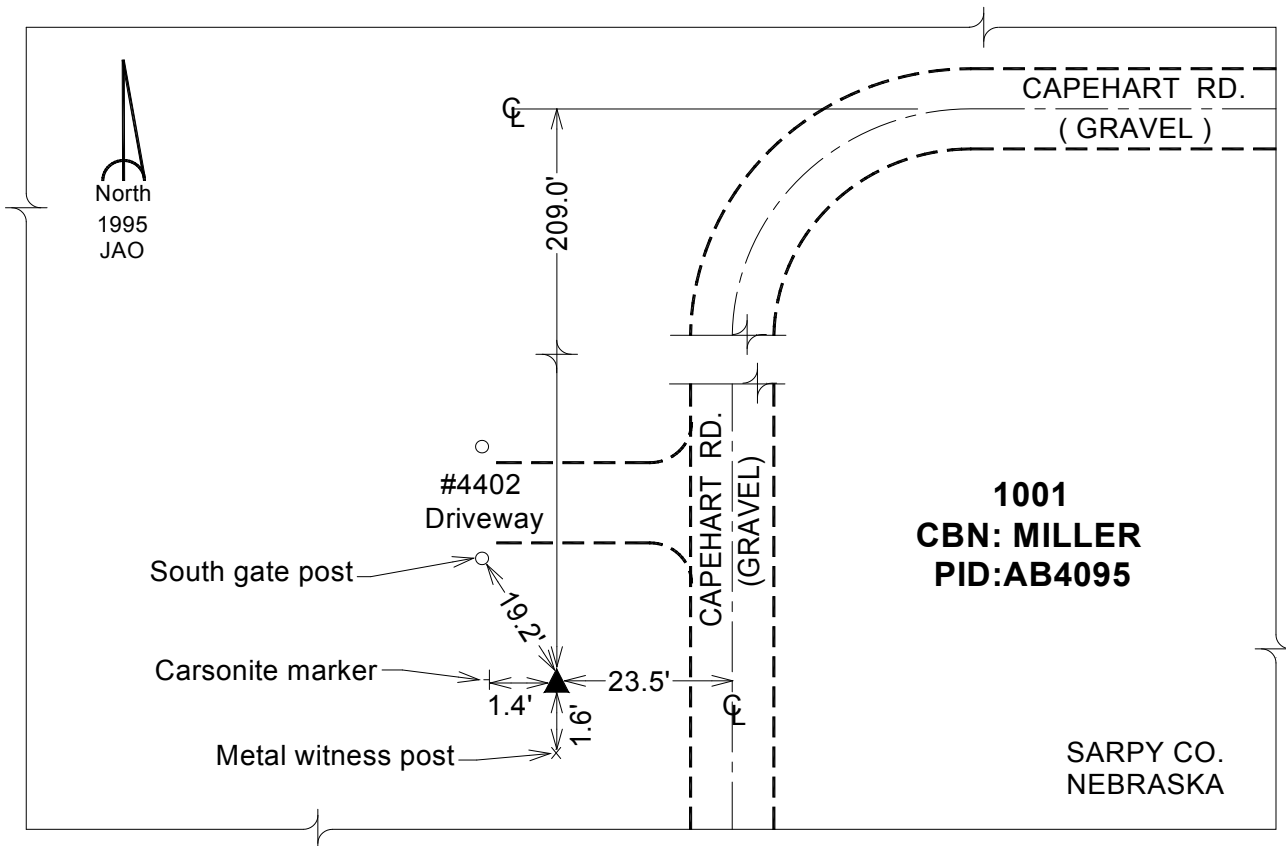
Designation: CBN horiz. control station "Miller" PID:AB4095

NAD 83(NA2011) Latitude: **N41°07'16.34532"** Longitude: **W95°58'51.92340"**
NAVD 88 Ortho Height: **1162.910sft** Ellip. Ht: **1074.132sft** Geoid12A

Iowa South Zone (1402) Northing: **418238.958sft** Easting: **956936.182sft**
Mapping Angle: **-1°38'03"** Combination Scale Factor: **0.999898081**

laRCS Zone 6 Northing: **6917515.829sft** Easting: **16431733.646sft**
Mapping Angle: **-00° 09' 47"** Combination Scale Factor: **0.999992874**

Monument Type: The station is a NeDOR triangulation station mark set in the top of a square concrete monument which is recessed about 0.2ft below the surface of the ground.



This document was prepared by Dan Corbin, Inc. on February 8, 2016 for Mills County, Iowa.