

**Mills County, Iowa**  
Horizontal Datum: **NAD 83(2011)** - Vertical Datum: **NAVD 1988**  
Iowa State Plane South Zone (1402)  
Iowa Regional Coordinate System, Zone 6 Council Bluffs  
US Survey Feet  
**2016**

Point Name: **1002**

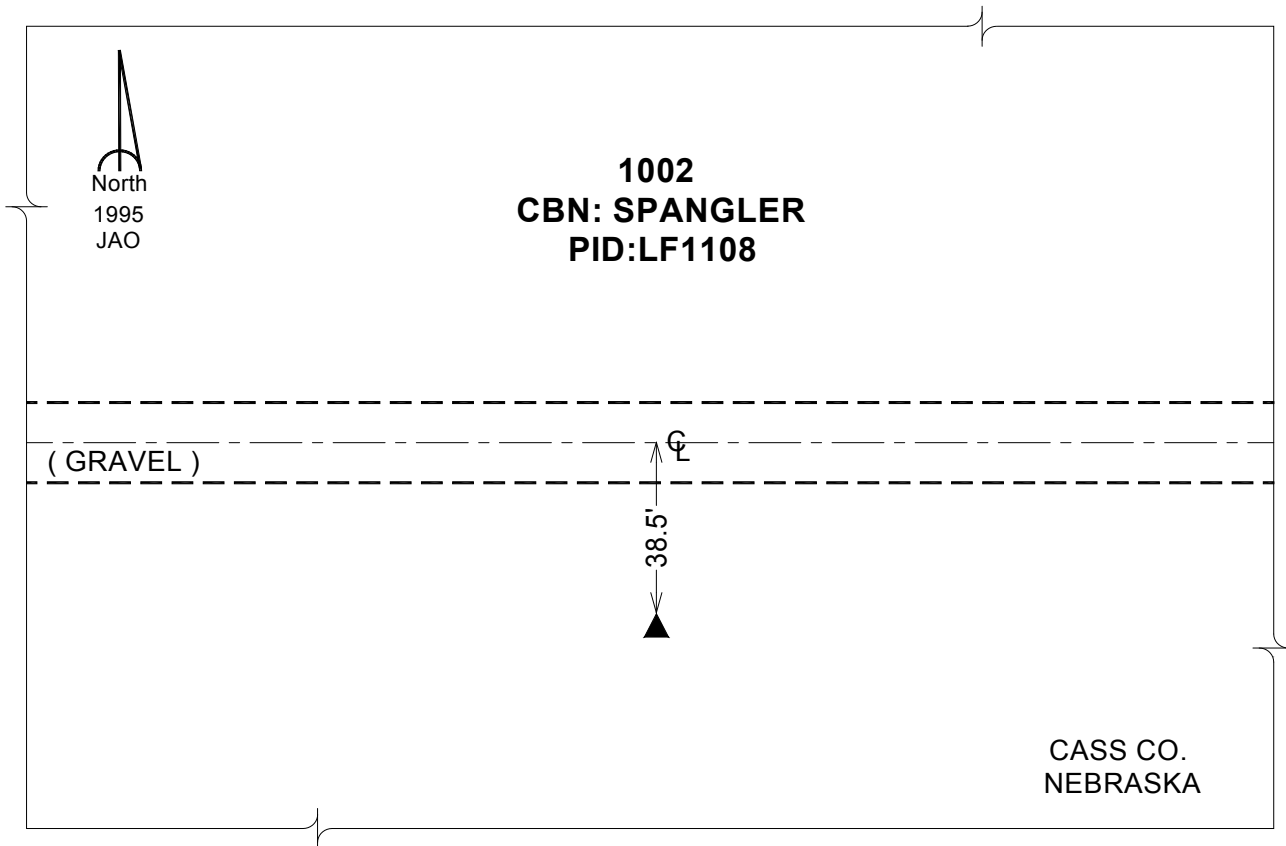
**Designation:** CBN horiz. & 2nd order vertical "Spangler" PID:LF1108

NAD 83(NA2011) Latitude: **N40°54'01.22622"** Longitude: **W95°57'33.13613"**  
NAVD 88 Ortho Height: **1264.290sft** Ellip. Ht: **1174.413sft** Geoid12A

**Iowa South Zone (1402)** Northing: **337630.883sft** Easting: **960688.719sft**  
Mapping Angle: **-1°37'12"** Combination Scale Factor: **0.999906015**

**laRCS Zone 6** Northing: **6837023.522sft** Easting: **16437555.717sft**  
Mapping Angle: **-00° 08' 52"** Combination Scale Factor: **0.999987199**

**Monument Type:** The station mark is a CGS triangulation disk stamped "SPANGLER 1934" set in the top of a cylindrical concrete monument that projects 2 inches.



*This document was prepared by Dan Corbin, Inc. on February 8, 2016 for Mills County, Iowa.*