

**Mills County, Iowa**  
Horizontal Datum: **NAD 83(2011)** - Vertical Datum: **NAVD 1988**  
Iowa State Plane South Zone (1402)  
Iowa Regional Coordinate System, Zone 6 Council Bluffs  
US Survey Feet  
**2016**

Point Name: **1003**

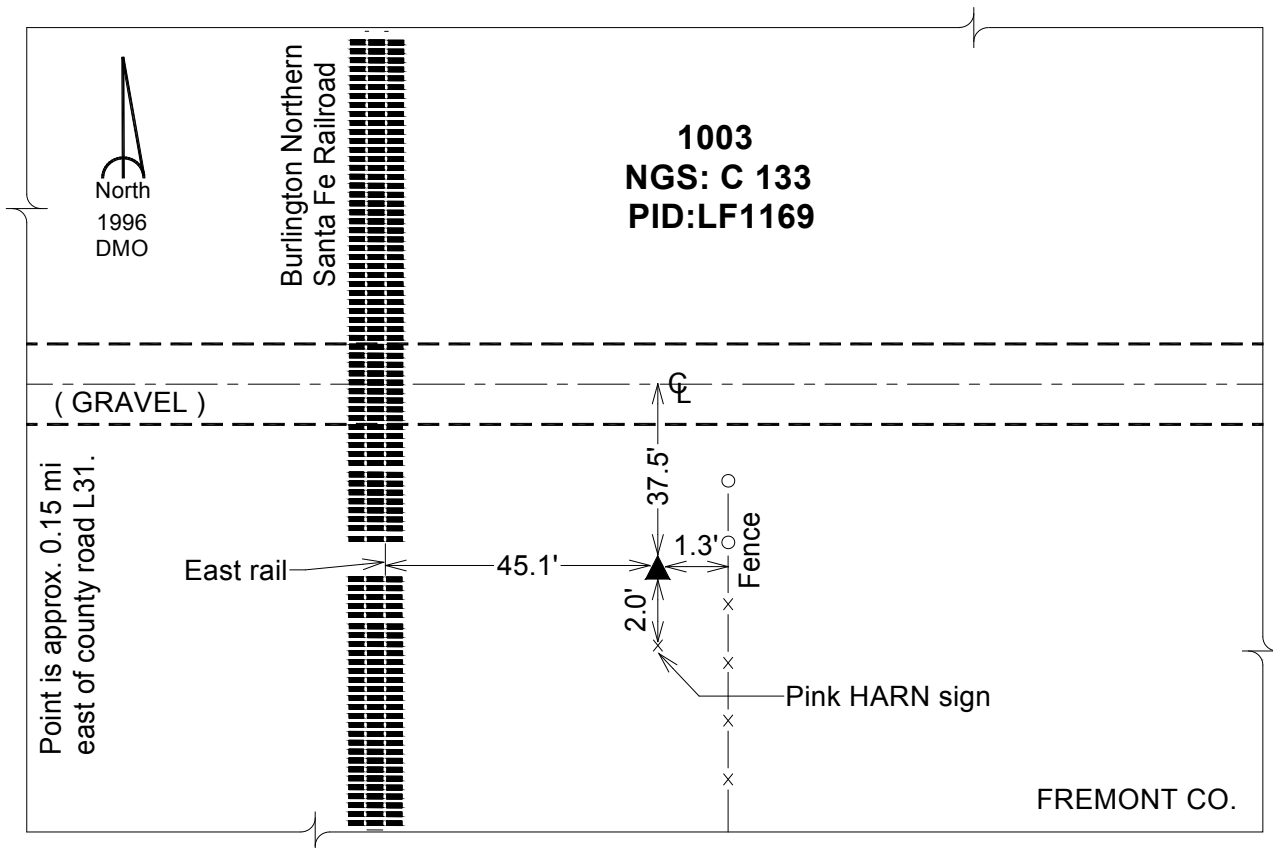
**Designation:** NGS horiz. & 1st order vertical "C 133" PID:LF1169

NAD 83(NA2011) Latitude: **N40°44'37.45689"** Longitude: **W95°48'35.31709"**  
NAVD 88 Ortho Height: **928.280sft** Ellip. Ht: **832.581sft** Geoid12A

**Iowa South Zone (1402)** Northing: **279464.410sft** Easting: **1000456.590sft**  
Mapping Angle: **-1°31'17"** Combination Scale Factor: **0.999940274**

**IaRCS Zone 6** Northing: **6779893.651sft** Easting: **16478807.416sft**  
Mapping Angle: **-00° 03' 00"** Combination Scale Factor: **0.999999629**

**Monument Type:** The station is a bench mark disk stamped "C 133 1948" and set in the top a concrete monument.



*This document was prepared by Dan Corbin, Inc. on February 8, 2016 for Mills County, Iowa.*