

Mills County, Iowa
 Horizontal Datum: **NAD 83(2011)** - Vertical Datum: **NAVD 1988**
 Iowa State Plane South Zone (1402)
 Iowa Regional Coordinate System, Zone 6 Council Bluffs
 US Survey Feet
2016

Point Name: **1004**

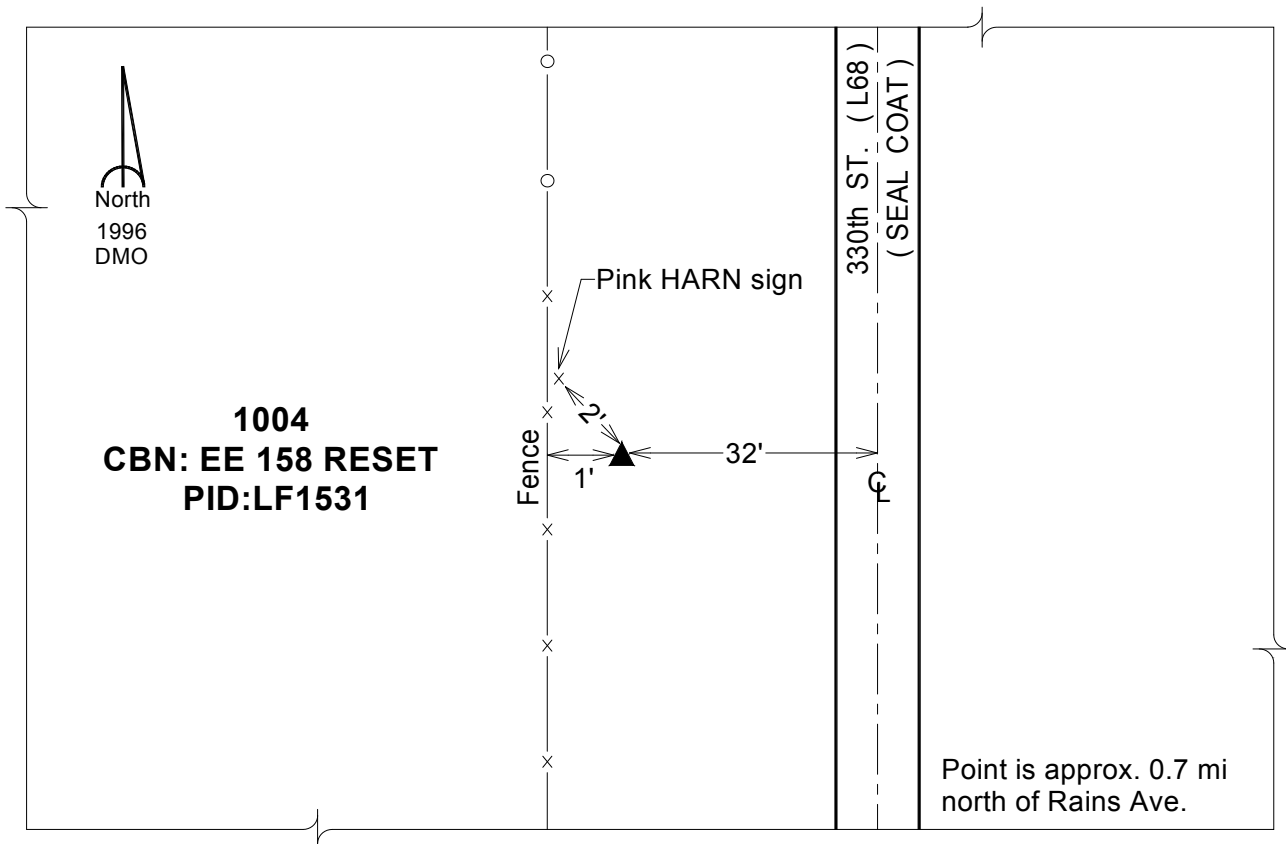
Designation: CBN horiz. & 3rd order vertical "EE 158 Reset" PID:LF1531

NAD 83(NA2011) Latitude: **N40°55'36.18608"** Longitude: **W95°33'23.75357"**
 NAVD 88 Ortho Height: **986.490sft** Ellip. Ht: **891.115sft** Geoid12A

Iowa South Zone (1402) Northing: **344349.702sft** Easting: **1072174.150sft**
 Mapping Angle: **-1°21'17"** Combination Scale Factor: **0.999917238**

IaRCS Zone 6 Northing: **6846603.222sft** Easting: **16548840.726sft**
 Mapping Angle: **00° 06' 57"** Combination Scale Factor: **0.999999039**

Monument Type: The station is a NGS vertical control disk stamped "EE 158 Reset 1978" and set in the top a concrete monument.



This document was prepared by Dan Corbin, Inc. on February 8, 2016 for Mills County, Iowa.