

Mills County, Iowa

Horizontal Datum: **NAD 83(2011)** - Vertical Datum: **NAVD 1988**

Iowa State Plane South Zone (1402)

Iowa Regional Coordinate System, Zone 6 Council Bluffs

US Survey Feet

2016

Point Name: **1005**

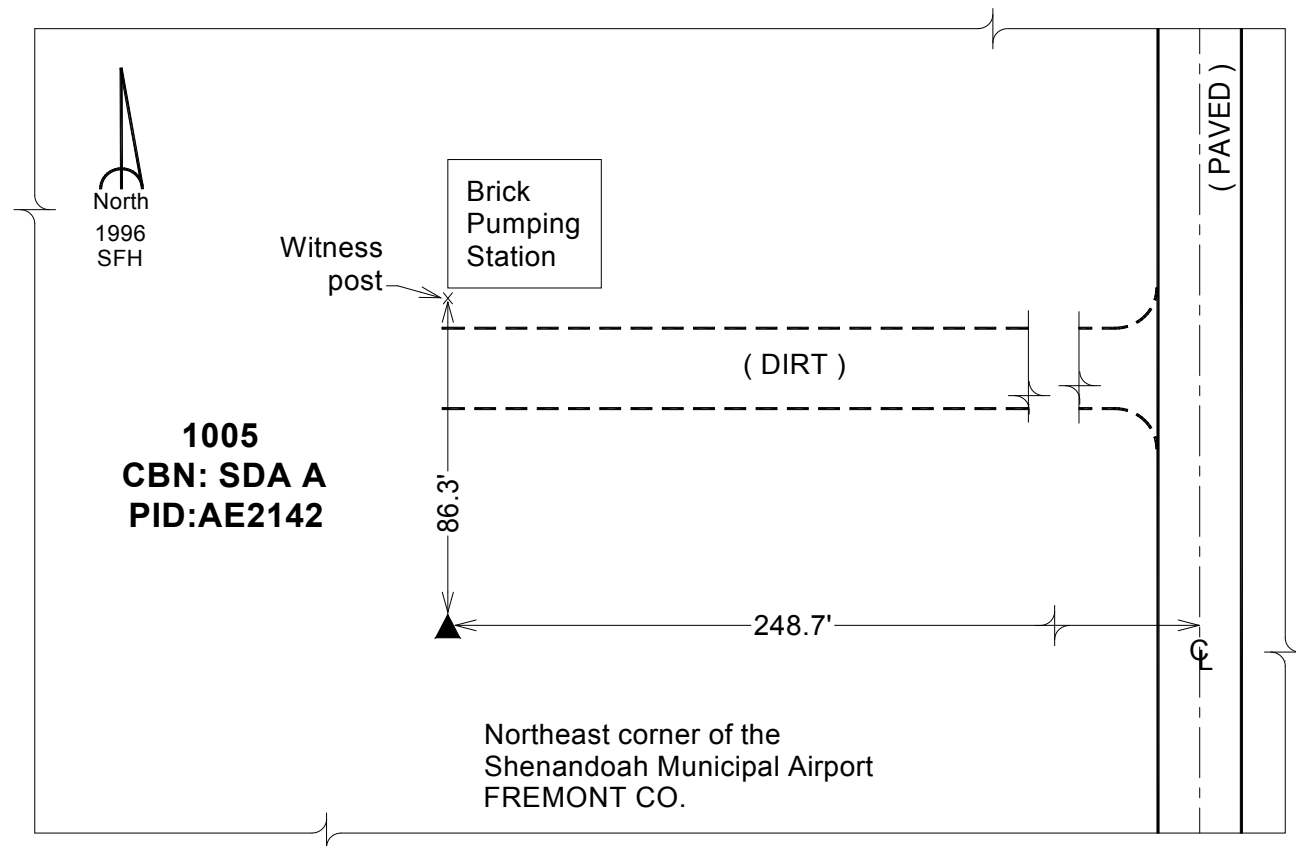
Designation: CBN horiz. control station "SDA A" PID:AE2142

NAD 83(NA2011) Latitude: **N40°45'16.47346"** Longitude: **W95°24'17.56993"**
NAVD 88 Ortho Height: **971.870sft** Ellip. Ht: **872.001sft** Geoid12A

Iowa South Zone (1402) Northing: **280693.901sft** Easting: **1112713.760sft**
Mapping Angle: **-1°15'17"** Combination Scale Factor: **0.999936913**

laRCS Zone 6 Northing: **6784003.480sft** Easting: **16591003.070sft**
Mapping Angle: **00° 12' 52"** Combination Scale Factor: **1.000006692**

Monument Type: The station is a stainless steel rod set flush, with access to the datum point through a 5-inch NGS logo cap stamped "SDA A 1996"



This document was prepared by Dan Corbin, Inc. on February 8, 2016 for Mills County, Iowa.