

Mills County, Iowa
 Horizontal Datum: **NAD 83(2011)** - Vertical Datum: **NAVD 1988**
 Iowa State Plane South Zone (1402)
 Iowa Regional Coordinate System, Zone 6 Council Bluffs
 US Survey Feet
2016

Point Name: **1007**

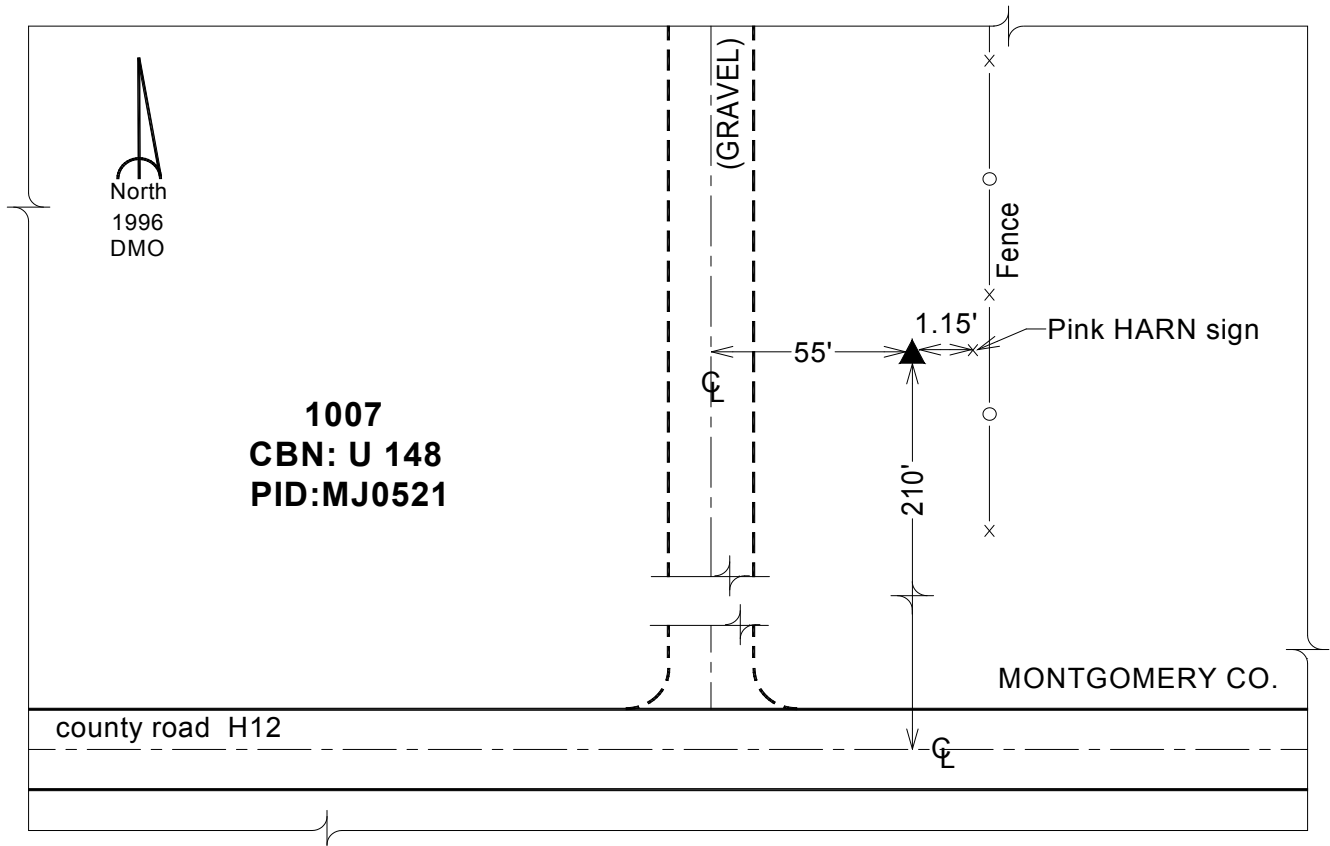
Designation: CBN horiz. & 2nd order vertical "U 148" PID: MJ0521

NAD 83(NA2011) Latitude: **N41°08'46.35709"** Longitude: **W95°17'20.47403"**
 NAVD 88 Ortho Height: **1274.650sft** Ellip. Ht: **1181.636sft** Geoid12A

Iowa South Zone (1402) Northing: **422666.960sft** Easting: **1147739.860sft**
 Mapping Angle: **-1°10'42"** Combination Scale Factor: **0.999892443**

IaRCS Zone 6 Northing: **6926841.474sft** Easting: **16622378.734sft**
 Mapping Angle: **00° 17' 33"** Combination Scale Factor: **0.999999514**

Monument Type: The station is a CGS bench mark disk stamped "U 148 1949" and set in the top a concrete monument.



This document was prepared by Dan Corbin, Inc. on February 8, 2016 for Mills County, Iowa.