

**Mills County, Iowa**

Horizontal Datum: **NAD 83(2011)** - Vertical Datum: **NAVD 1988**

Iowa State Plane South Zone (1402)

Iowa Regional Coordinate System, Zone 6 Council Bluffs

US Survey Feet

**2016**

Point Name: **1014**

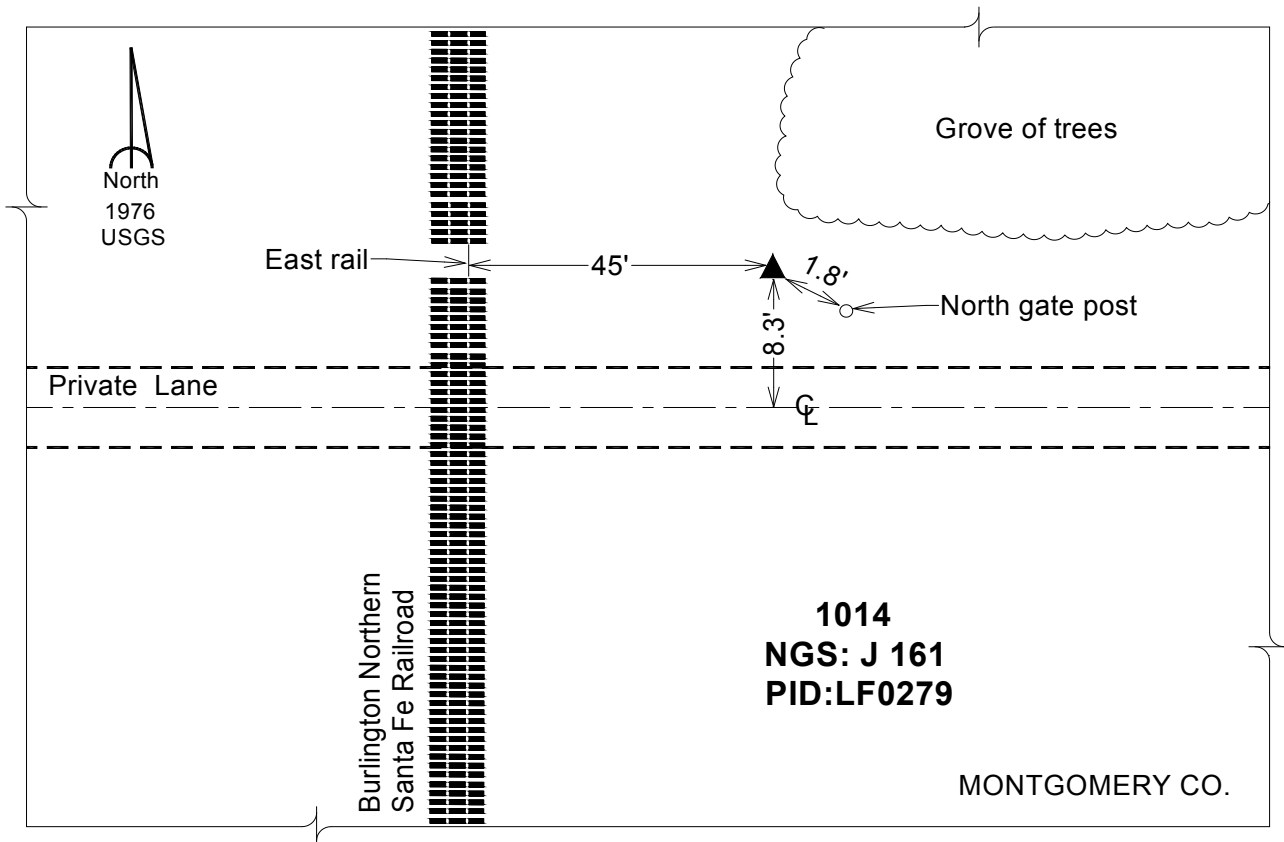
**Designation:** NGS 2nd order vertical "J 161" PID:LF0279

NAD 83(NA2011) Latitude: **N40°54'05.01239"** Longitude: **W95°16'12.11950"**  
NAVD 88 Ortho Height: **1007.430sft** Ellip. Ht: **908.280sft** Geoid12A

**Iowa South Zone (1402)** Northing: **333382.925sft** Easting: **1151153.118sft**  
Mapping Angle: **-1°09'57"** Combination Scale Factor: **0.999918618**

**laRCS Zone 6** Northing: **6837665.199sft** Easting: **16628081.970sft**  
Mapping Angle: **00° 18' 12"** Combination Scale Factor: **1.000014239**

**Monument Type:** The station is a CGS bench mark disk stamped "J 161 1949" and set in the top a concrete monument.



*This document was prepared by Dan Corbin, Inc. on February 8, 2016 for Mills County, Iowa.*