

Mills County, Iowa

Horizontal Datum: **NAD 83(2011)** - Vertical Datum: **NAVD 1988**

Iowa State Plane South Zone (1402)

Iowa Regional Coordinate System, Zone 6 Council Bluffs

US Survey Feet

2016

Point Name: **1016**

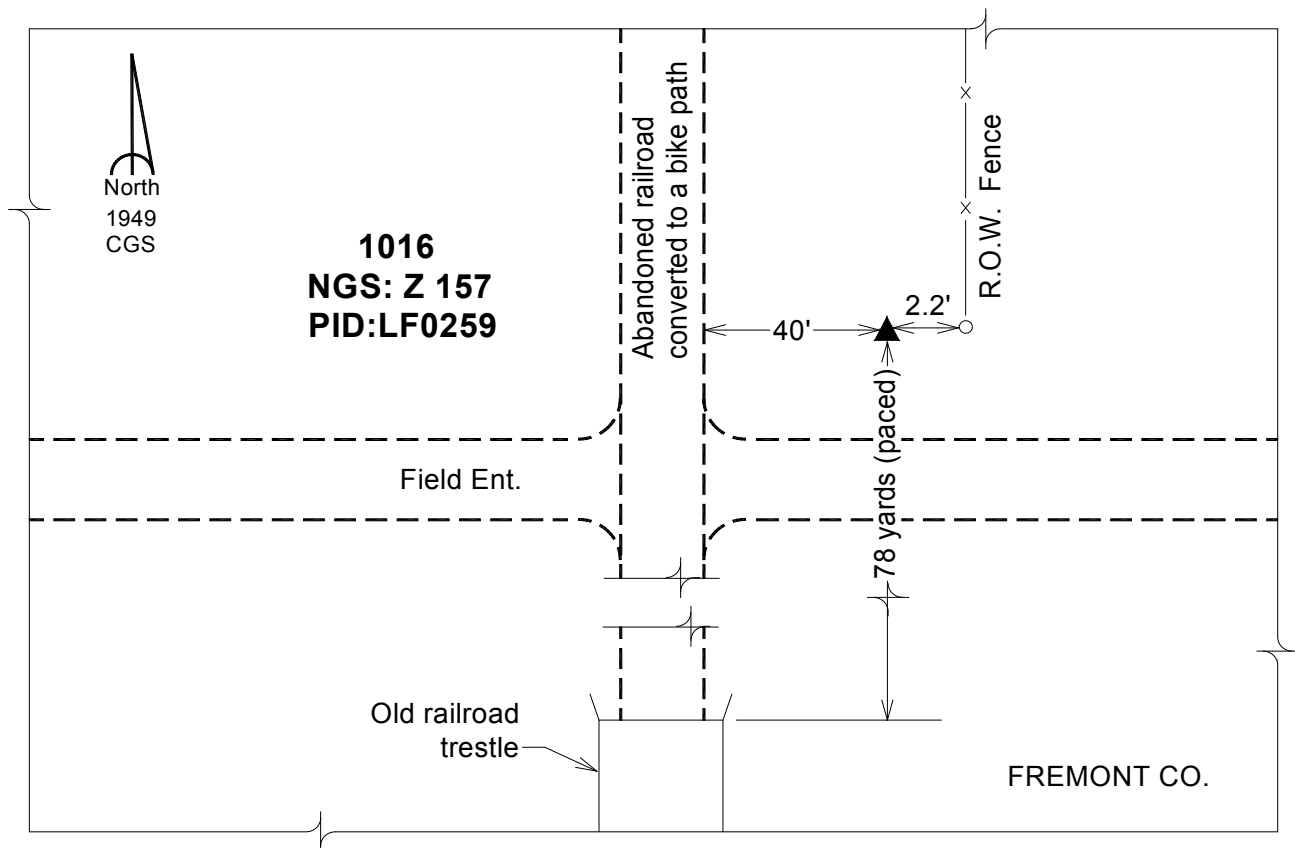
Designation: NGS 2nd order vertical "Z 157" PID:LF0259

NAD 83(NA2011) Latitude: **N40°50'11.19925"** Longitude: **W95°24'44.90657"**
NAVD 88 Ortho Height: **1003.530sft** Ellip. Ht: **904.605sft** Geoid12A

Iowa South Zone (1402) Northing: **310559.649sft** Easting: **1111266.235sft**
Mapping Angle: **-1°15'35"** Combination Scale Factor: **0.999925319**

laRCS Zone 6 Northing: **6813824.523sft** Easting: **16588790.023sft**
Mapping Angle: **00° 12' 35"** Combination Scale Factor: **1.000004676**

Monument Type: The station is a CGS bench mark disk stamped "Z 157 1949" and set in the top a concrete monument.



This document was prepared by Dan Corbin, Inc. on February 8, 2016 for Mills County, Iowa.