

Mills County, Iowa
 Horizontal Datum: **NAD 83(2011)** - Vertical Datum: **NAVD 1988**
 Iowa State Plane South Zone (1402)
 Iowa Regional Coordinate System, Zone 6 Council Bluffs
 US Survey Feet
2016

Point Name: **1017**

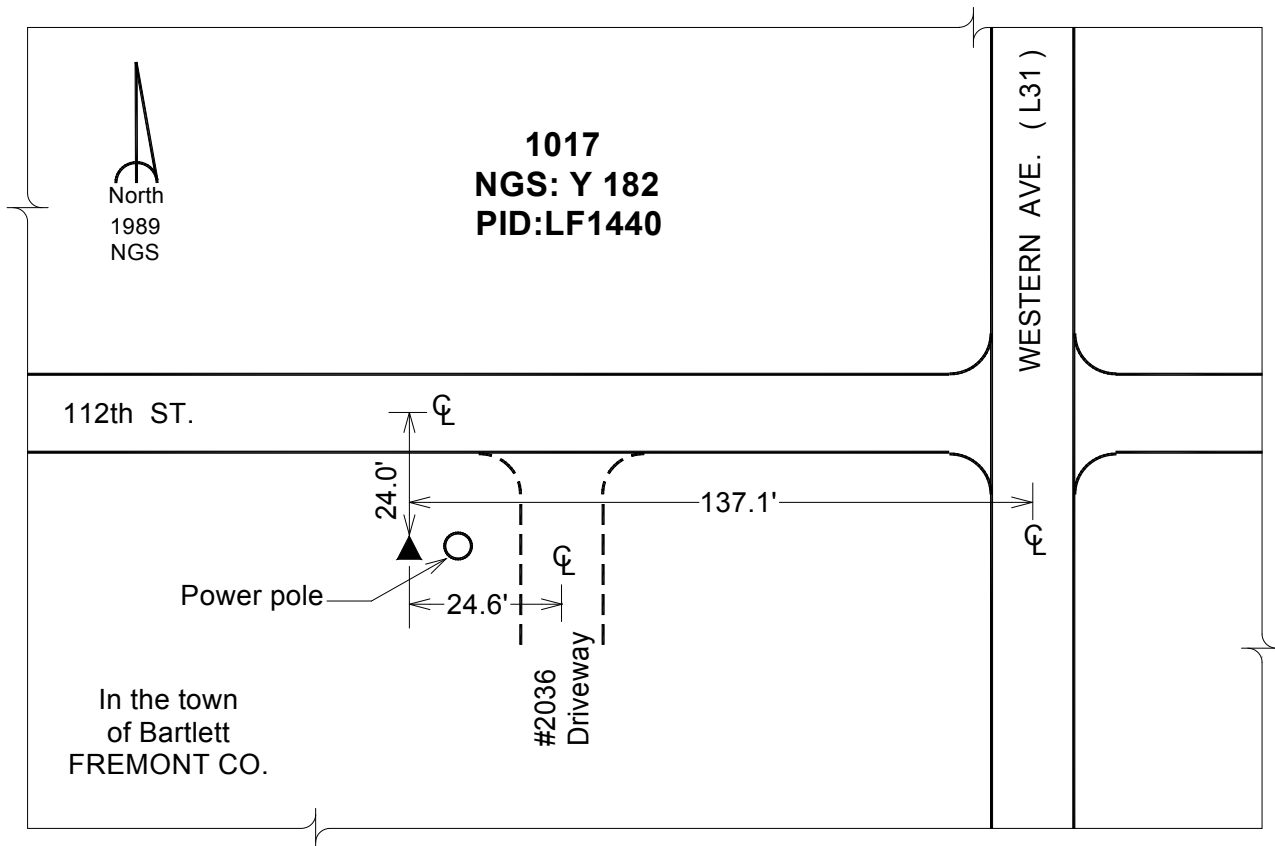
Designation: NGS 2nd order vertical "Y 182" PID:LF1440

NAD 83(NA2011) Latitude: **N40°53'06.47667"** Longitude: **W95°47'43.41178"**
 NAVD 88 Ortho Height: **945.290sft** Ellip. Ht: **852.475sft** Geoid12A

Iowa South Zone (1402) Northing: **330854.535sft** Easting: **1005809.614sft**
 Mapping Angle: **-1°30'43"** Combination Scale Factor: **0.999922795**

laRCS Zone 6 Northing: **6831407.802sft** Easting: **16482839.308sft**
 Mapping Angle: **-00° 02' 26"** Combination Scale Factor: **0.999998500**

Monument Type: The station is a stainless steel rod set flush, with access to the datum point through a 5-inch NGS logo cap stamped "Y 182 1989"



This document was prepared by Dan Corbin, Inc. on February 8, 2016 for Mills County, Iowa.