

**Mills County, Iowa**  
Horizontal Datum: **NAD 83(2011)** - Vertical Datum: **NAVD 1988**  
Iowa State Plane South Zone (1402)  
Iowa Regional Coordinate System, Zone 6 Council Bluffs  
US Survey Feet  
**2016**

Point Name: **1019**

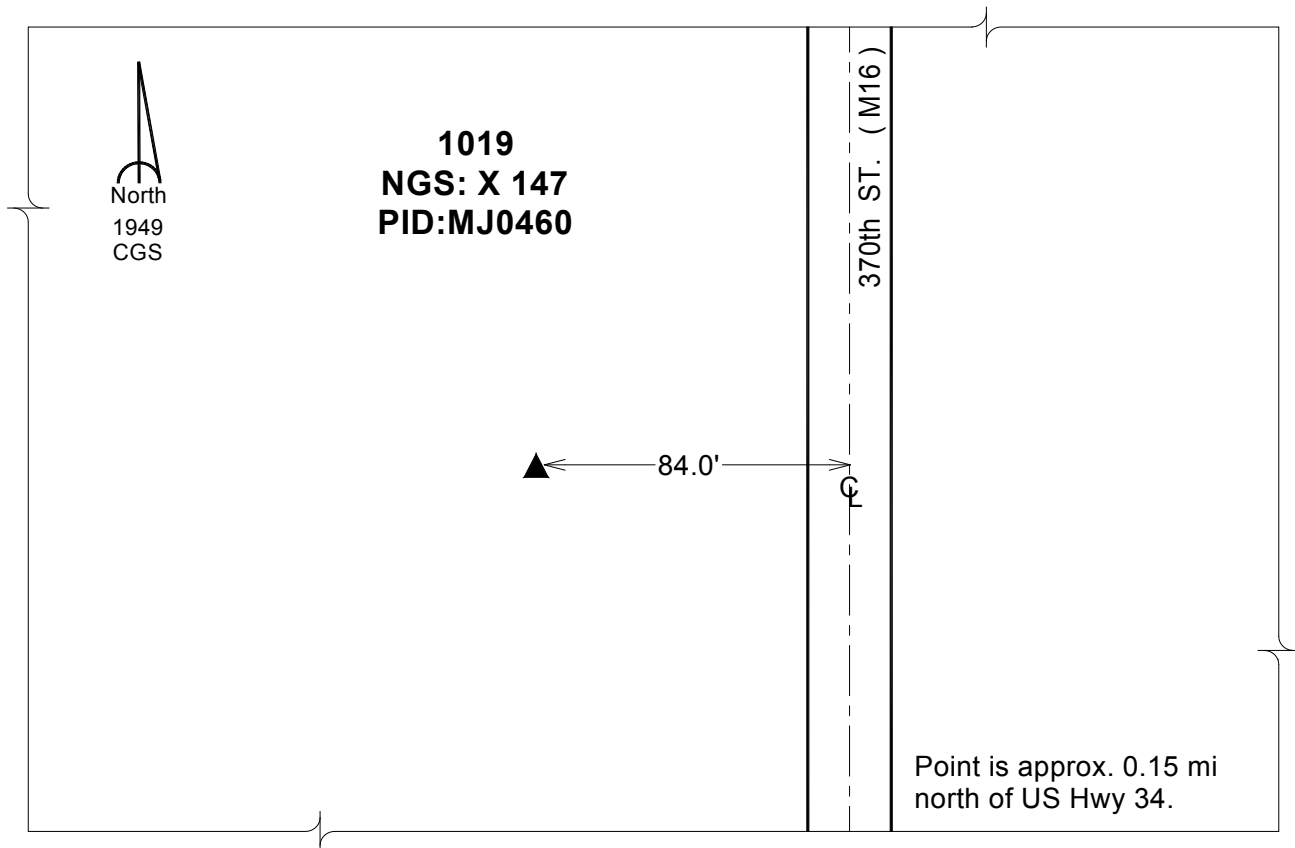
**Designation:** NGS 2nd order vertical "X 147" PID: MJ0460

NAD 83(NA2011) Latitude: **N41°01'59.89169"** Longitude: **W95°28'48.70769"**  
NAVD 88 Ortho Height: **1007.920sft** Ellip. Ht: **914.192sft** Geoid12A

**Iowa South Zone (1402)** Northing: **382682.083sft** Easting: **1094164.322sft**  
Mapping Angle: **-1°18'16"** Combination Scale Factor: **0.999909006**

**IaRCS Zone 6** Northing: **6885490.679sft** Easting: **16569841.802sft**  
Mapping Angle: **00° 09' 58"** Combination Scale Factor: **1.000000783**

**Monument Type:** The station is a CGS bench mark disk stamped "X 147 1949" and set in the top a concrete monument.



*This document was prepared by Dan Corbin, Inc. on February 8, 2016 for Mills County, Iowa.*