

**Mills County, Iowa**

Horizontal Datum: **NAD 83(2011)** - Vertical Datum: **NAVD 1988**  
Iowa State Plane South Zone (1402)  
Iowa Regional Coordinate System, Zone 6 Council Bluffs  
US Survey Feet  
**2016**

Point Name: **501**

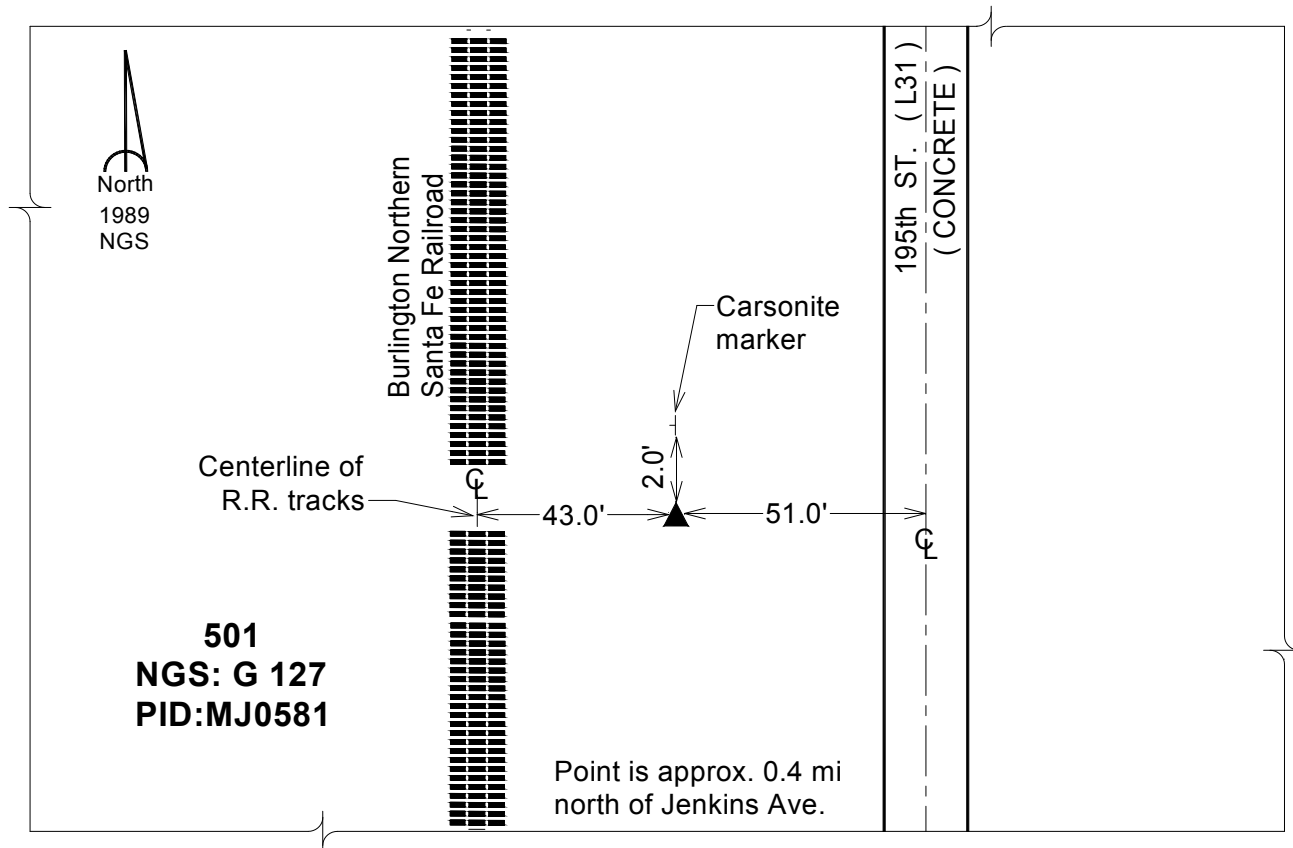
**Designation:** NGS 1st order vert. station "G 127" PID: MJ0581

NAD 83(NA2011) Latitude: **N41°01'43.09460"** Longitude: **W95°48'07.23333"**  
NAVD 88 Ortho Height: **960.300sft** Ellip. Ht: **869.744sft** Geoid12A

**Iowa South Zone (1402)** Northing: **383167.914sft** Easting: **1005364.132sft**  
Mapping Angle: **-1°30'59"** Combination Scale Factor: **0.999911367**

**IaRCS Zone 6** Northing: **6883696.769sft** Easting: **16481050.610sft**  
Mapping Angle: **-00° 02' 42"** Combination Scale Factor: **0.999997748**

**Monument Type:** The station is a bench mark disk stamped "G 127 1947" and set in the top a concrete monument.



*This document was prepared by Dan Corbin, Inc. on February 8, 2016 for Mills County, Iowa.*