

Mills County, Iowa
 Horizontal Datum: **NAD 83(2011)** - Vertical Datum: **NAVD 1988**
 Iowa State Plane South Zone (1402)
 Iowa Regional Coordinate System, Zone 6 Council Bluffs
 US Survey Feet
2016

Point Name: **502**

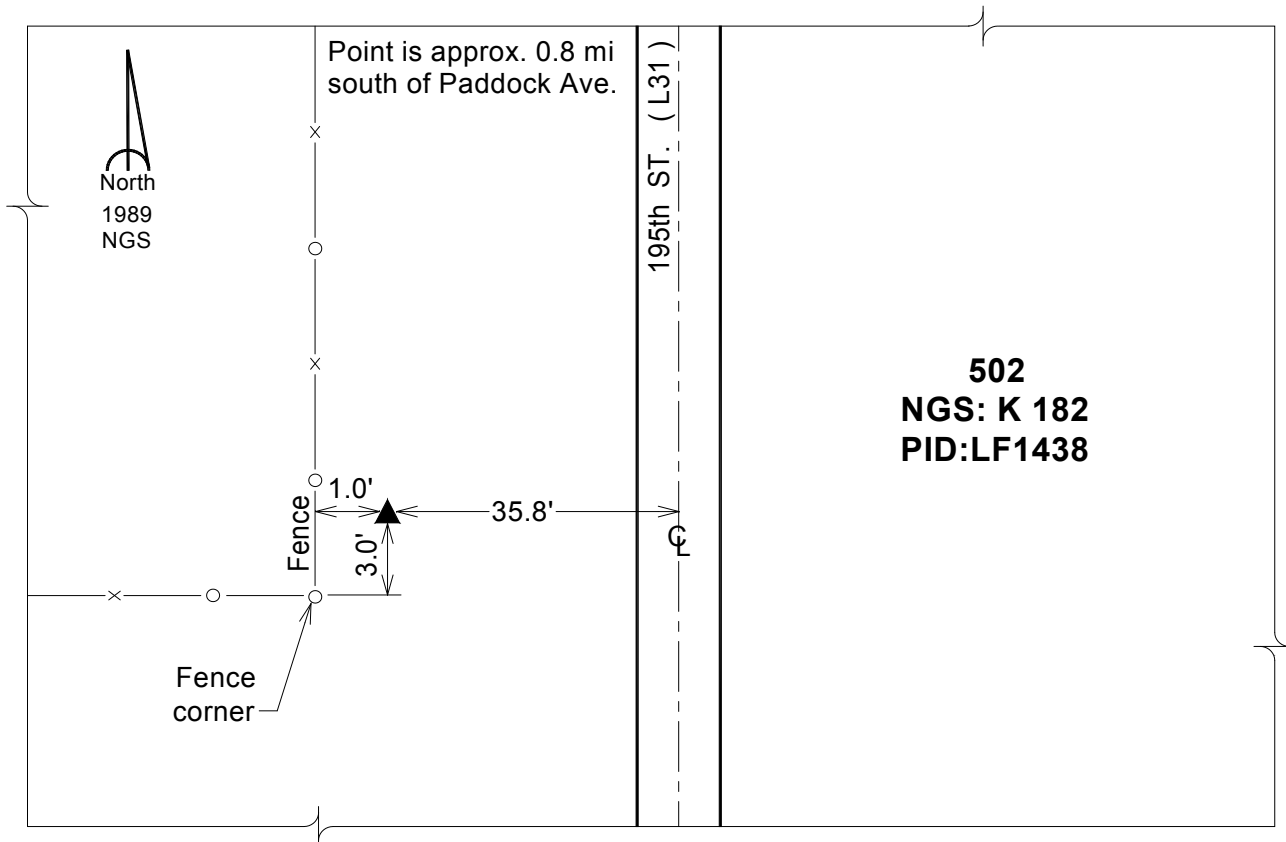
Designation: NGS 1st order vert. station "K 182" PID:LF1438

NAD 83(NA2011) Latitude: **N40°56'03.47684"** Longitude: **W95°48'08.28655"**
 NAVD 88 Ortho Height: **943.880sft** Ellip. Ht: **852.197sft** Geoid12A

Iowa South Zone (1402) Northing: **348811.633sft** Easting: **1004373.817sft**
 Mapping Angle: **-1°31'00"** Combination Scale Factor: **0.999918474**

IaRCS Zone 6 Northing: **6849323.512sft** Easting: **16480942.750sft**
 Mapping Angle: **-00° 02' 43"** Combination Scale Factor: **0.999998592**

Monument Type: The station is a stainless steel rod set flush, with access to the datum point through a 5-inch NGS logo cap stamped "K 182 1989"



This document was prepared by Dan Corbin, Inc. on February 8, 2016 for Mills County, Iowa.