

**Mills County, Iowa**  
Horizontal Datum: **NAD 83(2011)** - Vertical Datum: **NAVD 1988**  
Iowa State Plane South Zone (1402)  
Iowa Regional Coordinate System, Zone 6 Council Bluffs  
US Survey Feet  
**2016**

Point Name: **503**

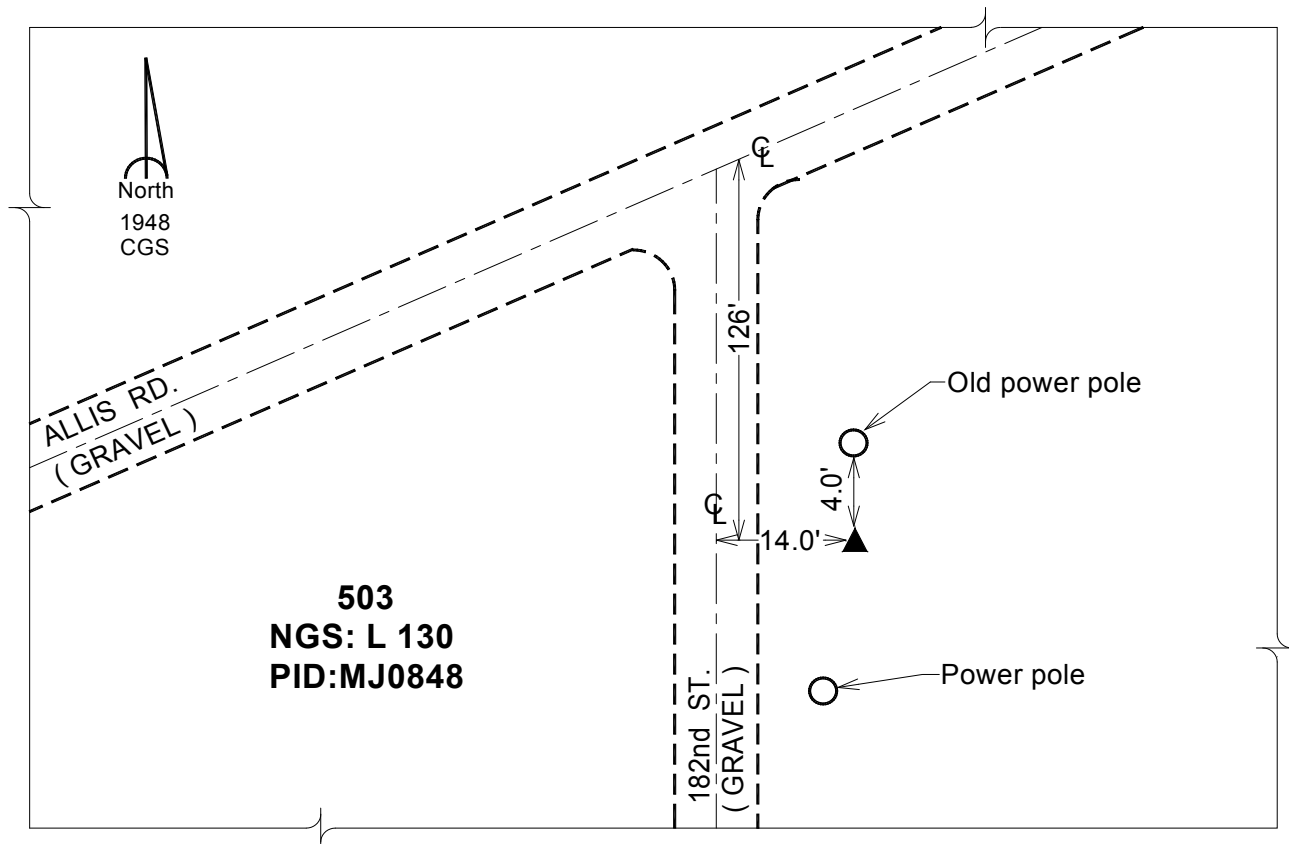
**Designation:** NGS 2nd order vert. station "L 130" PID: MJ0848

NAD 83(NA2011) Latitude: **N41°07'17.26452"** Longitude: **W95°49'57.32127"**  
NAVD 88 Ortho Height: **967.630sft** Ellip. Ht: **877.774sft** Geoid12A

**Iowa South Zone (1402)** Northing: **417200.001sft** Easting: **997836.894sft**  
Mapping Angle: **-1°32'11"** Combination Scale Factor: **0.999907444**

**IaRCS Zone 6** Northing: **6917527.376sft** Easting: **16472651.332sft**  
Mapping Angle: **-00° 03' 55"** Combination Scale Factor: **0.999997808**

**Monument Type:** The station is a bench mark disk stamped "L 130 1948" and set in the top a concrete monument.



*This document was prepared by Dan Corbin, Inc. on February 8, 2016 for Mills County, Iowa.*