

Mills County, Iowa

Horizontal Datum: **NAD 83(2011)** - Vertical Datum: **NAVD 1988**

Iowa State Plane South Zone (1402)

Iowa Regional Coordinate System, Zone 6 Council Bluffs

US Survey Feet

2016

Point Name: **504 (Not Fnd 7-23-2013)**

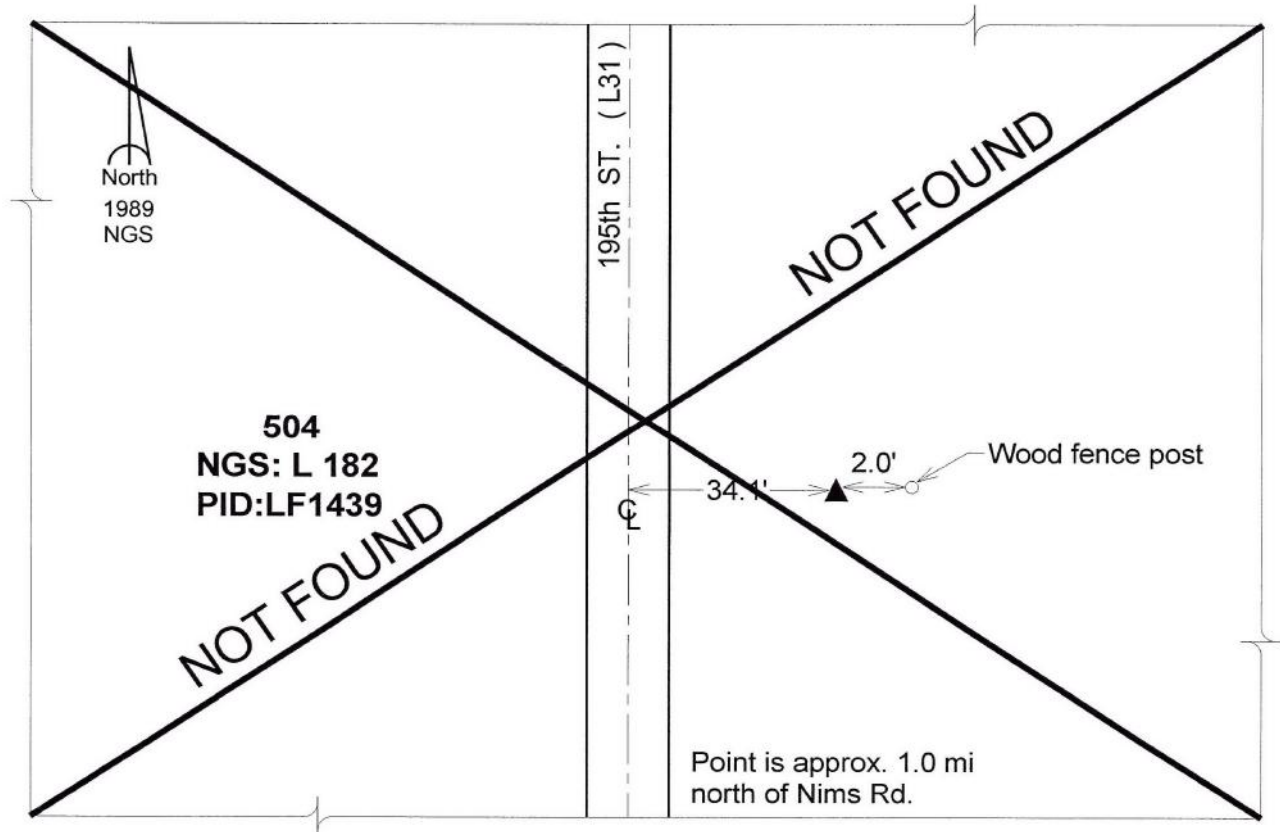
Designation: NGS 1st order vert. station "L 182" PID:LF1439

NAD 83(NA2011) Latitude: **N40°59'07.06315"** Longitude: **W95°48'31.57257"**
NAVD 88 Ortho Height: **955.020sft** Ellip. Ht: **864.276sft** **Geoid03**

~~Iowa South Zone (1402) Northing: 367431.960sft Easting: 1003080.362sft~~
~~Mapping Angle: -1°31'15" Combination Scale Factor: 0.999914170~~

IaRCS Zone 6 Northing: **n/a** Easting: **n/a**
Mapping Angle: **n/a** Combination Scale Factor: **n/a**

Monument Type: The station is a stainless steel rod set flush, with access to the datum point through a 5-inch NGS logo cap stamped "L 182 1989"



This document was prepared by Dan Corbin, Inc. on February 8, 2016 for Mills County, Iowa.