

Mills County, Iowa

Horizontal Datum: **NAD 83(2011)** - Vertical Datum: **NAVD 1988**
Iowa State Plane South Zone (1402)
Iowa Regional Coordinate System, Zone 6 Council Bluffs
US Survey Feet
2016

Point Name: **616**

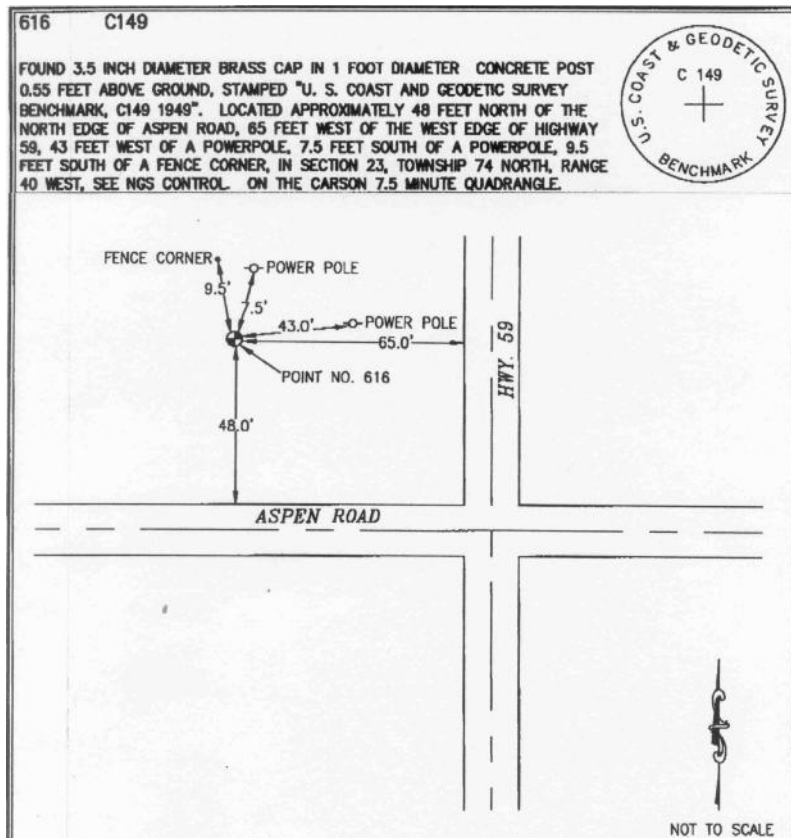
Designation: NGS 2nd order vert, station "C 149 1949" PID: MJ0474

NAD 83(NA2011) Latitude: **N41°10'42.62538"** Longitude: **W95°24'14.13373"**
NAVD 88 Ortho Height: **1194.220sft** Ellip. Ht: **1102.275sft** Geoid12A

Iowa South Zone (1402) Northing: **435102.898sft** Easting: **1116358.586sft**
Mapping Angle: **-1°15'15"** Combination Scale Factor: **0.999895852**

IaRCS Zone 6 Northing: **6938468.982sft** Easting: **16590685.300sft**
Mapping Angle: **00° 13' 01"** Combination Scale Factor: **0.999995599**

Monument Type: The station is a USGS bench mark disk stamped "C 149 1949" and set in the top a 1ft dia. concrete post 0.55ft above ground.



This document was prepared by Dan Corbin, Inc. on February 8, 2016 for Mills County, Iowa.