

**Mills County, Iowa**

Horizontal Datum: **NAD 83(2011)** - Vertical Datum: **NAVD 1988**  
Iowa State Plane South Zone (1402)  
Iowa Regional Coordinate System, Zone 6 Council Bluffs  
US Survey Feet  
**2016**

Point Name: **623**

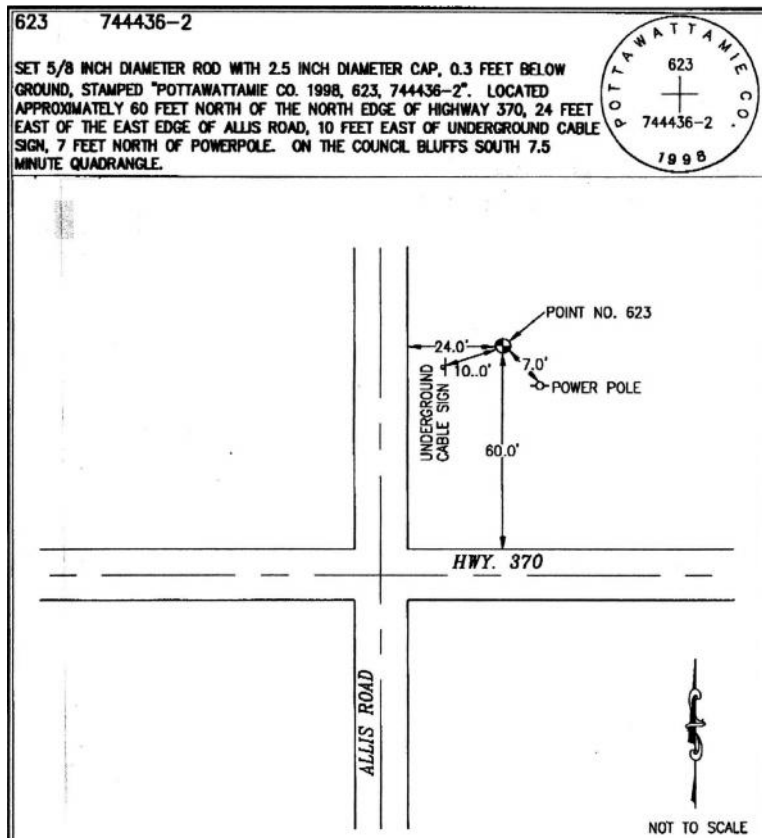
**Designation:** Pottawattamie Co 623 (set by Merrick in 1998)

NAD 83(NA2011) Latitude: **N41°08'56.96432"** Longitude: **W95°51'20.76584"**  
NAVD 88 Ortho Height: **965.633sft** Ellip. Ht: **875.897sft** Geoid12A

**Iowa South Zone (1402)** Northing: **427458.540sft** Easting: **991726.342sft**  
Mapping Angle: **-1°33'06"** Combination Scale Factor: **0.999906982**

**IaRCS Zone 6** Northing: **6927626.569sft** Easting: **16466278.833sft**  
Mapping Angle: **-00° 04' 50"** Combination Scale Factor: **0.999998343**

**Monument Type:** The station is 5/8 inch dia. rod with a 2.5 inch dia. cap, stamped "Pottawattamie Co.1998, 623 744436-2".



*This document was prepared by Dan Corbin, Inc. on February 8, 2016 for Mills County, Iowa.*