

Mills County, Iowa

Horizontal Datum: **NAD 83(2011)** - Vertical Datum: **NAVD 1988**

Iowa State Plane South Zone (1402)

Iowa Regional Coordinate System, Zone 6 Council Bluffs

US Survey Feet

2016

Point Name: **624**

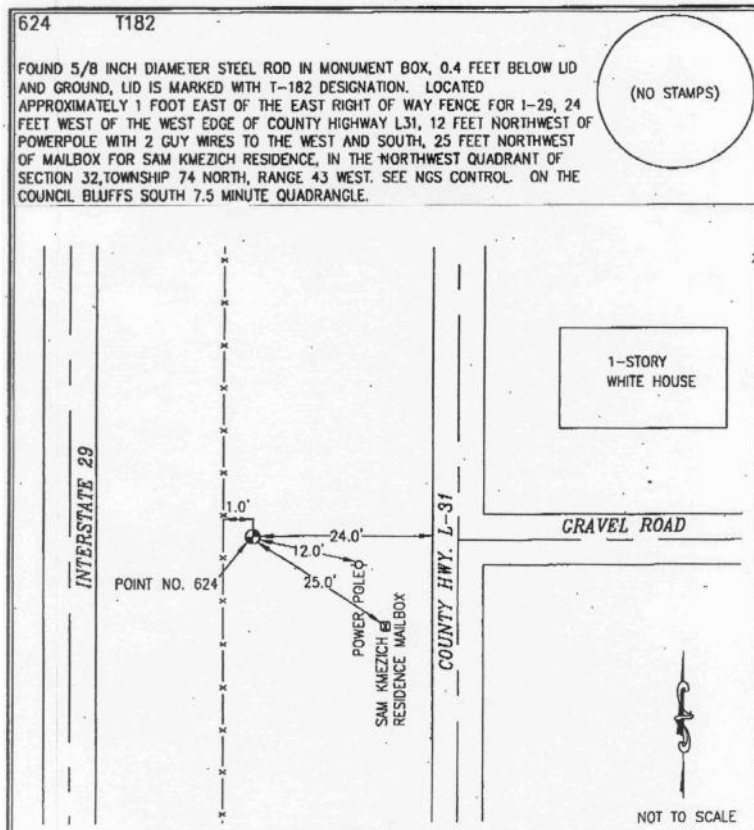
Designation: Pott.Co 624 (NGS 1st vert. "T 182" PID: MJ1399)

NAD 83(NA2011) Latitude: **N41°09'49.72938"** Longitude: **W95°49'22.63908"**
NAVD 88 Ortho Height: **971.550sft** Ellip. Ht: **881.596sft** Geoid12A

Iowa South Zone (1402) Northing: **432553.758sft** Easting: **1000902.241sft**
Mapping Angle: **-1°31'48"** Combination Scale Factor: **0.999906513**

IaRCS Zone 6 Northing: **6932956.173sft** Easting: **16475321.720sft**
Mapping Angle: **-00° 03' 32"** Combination Scale Factor: **0.999997467**

Monument Type: The station is a stainless steel rod set flush, with access to the datum point through a 5-inch NGS logo cap stamped "T 182 1989"



This document was prepared by Dan Corbin, Inc. on February 8, 2016 for Mills County, Iowa.