

Mills County, Iowa

Horizontal Datum: **NAD 83(2011)** - Vertical Datum: **NAVD 1988**
Iowa State Plane South Zone (1402)
Iowa Regional Coordinate System, Zone 6 Council Bluffs
US Survey Feet
2016

Point Name: **625**

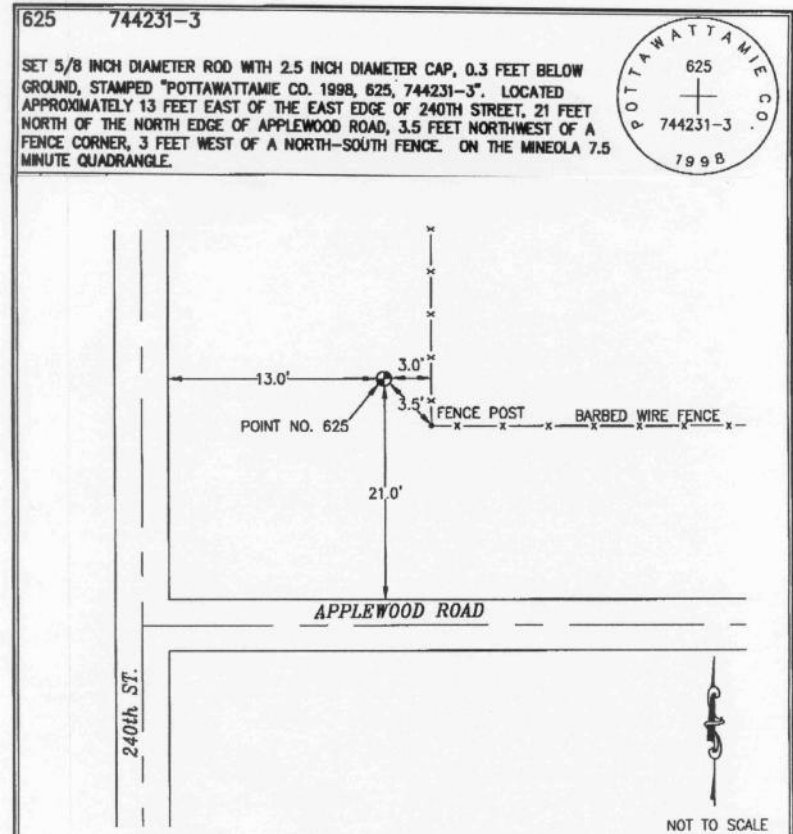
Designation: Pottawattamie Co 625 (set by Merrick in 1998)

NAD 83(NA2011) Latitude: **N41°09'44.48702"** Longitude: **W95°43'38.76772"**
NAVD 88 Ortho Height: **1177.405sft** Ellip. Ht: **1087.016sft** Geoid**12A**

Iowa South Zone (1402) Northing: **431335.530sft** Easting: **1027179.591sft**
Mapping Angle: **-1°28'02"** Combination Scale Factor: **0.999896729**

IaRCS Zone 6 Northing: **6932412.919sft** Easting: **16501624.068sft**
Mapping Angle: **00° 00' 14"** Combination Scale Factor: **0.999986934**

Monument Type: The station is 5/8 inch dia. rod with a 2.5 inch dia. cap, stamped "Pottawattamie Co.1998, 625 744231-3".



This document was prepared by Dan Corbin, Inc. on February 8, 2016 for Mills County, Iowa.