

Mills County, Iowa

Horizontal Datum: **NAD 83(2011)** - Vertical Datum: **NAVD 1988**
Iowa State Plane South Zone (1402)
Iowa Regional Coordinate System, Zone 6 Council Bluffs
US Survey Feet
2016

Point Name: **626**

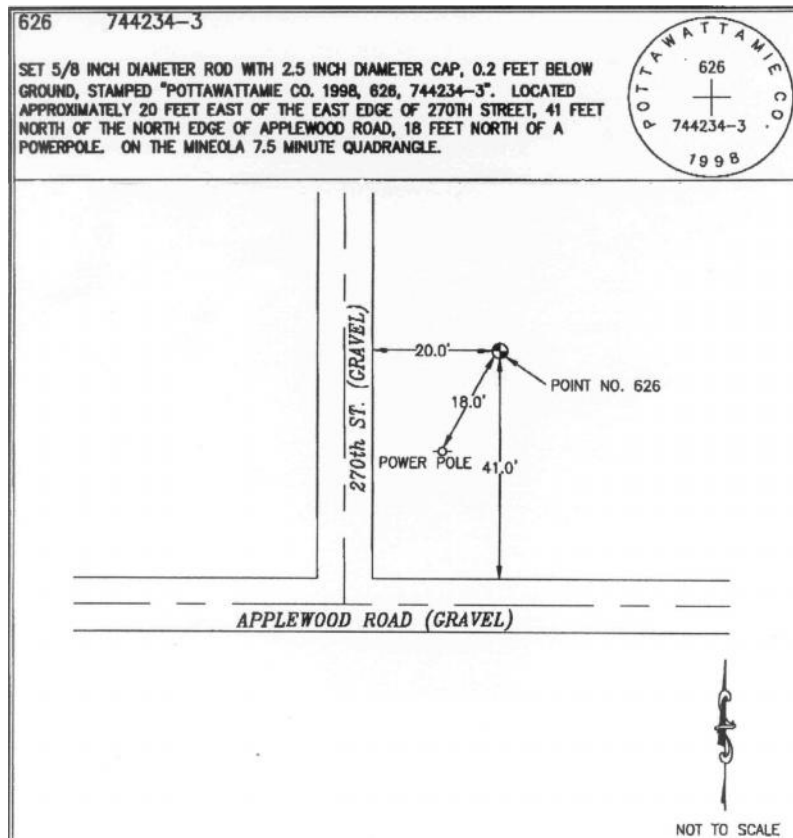
Designation: Pottawattamie Co 626 (set by Merrick in 1998)

NAD 83(NA2011) Latitude: **N41°09'36.79949"** Longitude: **W95°40'12.99087"**
NAVD 88 Ortho Height: **1113.482sft** Ellip. Ht: **1022.747sft** Geoid12A

Iowa South Zone (1402) Northing: **430159.936sft** Easting: **1042893.703sft**
Mapping Angle: **-1°25'46"** Combination Scale Factor: **0.999899821**

IaRCS Zone 6 Northing: **6931641.060sft** Easting: **16517364.606sft**
Mapping Angle: **00° 02' 29"** Combination Scale Factor: **0.999990354**

Monument Type: The station is 5/8 inch dia. rod with a 2.5 inch dia. cap, stamped "Pottawattamie Co.1998, 626 744234-3".



This document was prepared by Dan Corbin, Inc. on February 8, 2016 for Mills County, Iowa.