

**Mills County, Iowa**

Horizontal Datum: **NAD 83(2011)** - Vertical Datum: **NAVD 1988**  
Iowa State Plane South Zone (1402)  
Iowa Regional Coordinate System, Zone 6 Council Bluffs  
US Survey Feet  
**2016**

Point Name: **627**

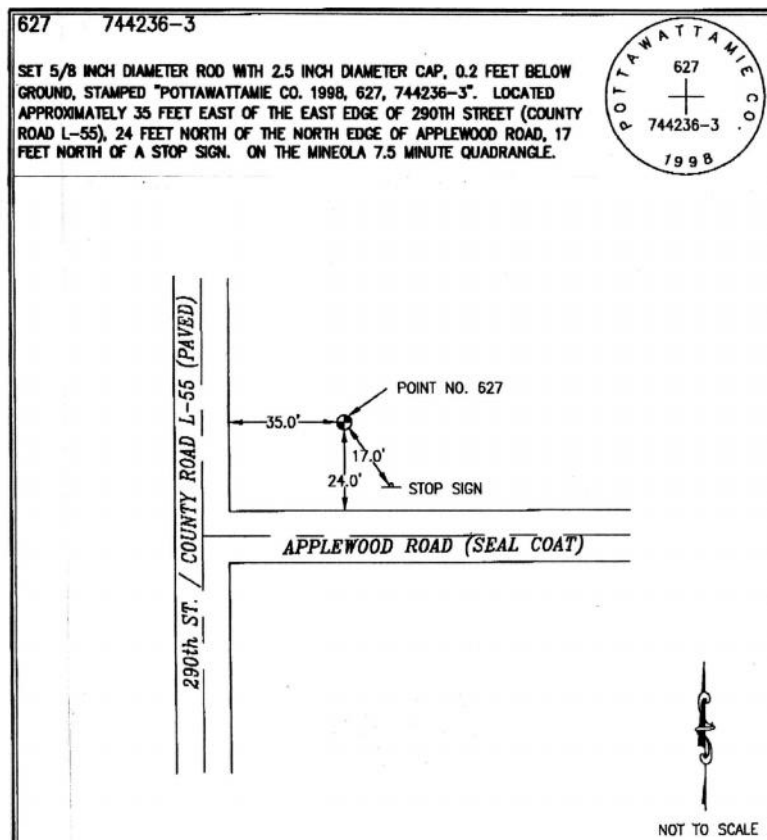
**Designation:** Pottawattamie Co 627 (set by Merrick in 1998)

NAD 83(NA2011) Latitude: **N41°09'38.52439"** Longitude: **W95°37'57.92451"**  
NAVD 88 Ortho Height: **1146.172sft** Ellip. Ht: **1055.230sft** Geoid12A

Iowa South Zone (1402) Northing: **430078.950sft** Easting: **1053225.518sft**  
Mapping Angle: **-1°24'17"** Combination Scale Factor: **0.999898265**

IaRCS Zone 6 Northing: **6931825.356sft** Easting: **16527696.034sft**  
Mapping Angle: **00° 03' 58"** Combination Scale Factor: **0.999989330**

**Monument Type:** The station is 5/8 inch dia. rod with a 2.5 inch dia. cap, stamped "Pottawattamie Co.1998, 627 744236-3".



*This document was prepared by Dan Corbin, Inc. on February 8, 2016 for Mills County, Iowa.*