

**Mills County, Iowa**

Horizontal Datum: **NAD 83(2011)** - Vertical Datum: **NAVD 1988**

Iowa State Plane South Zone (1402)

Iowa Regional Coordinate System, Zone 6 Council Bluffs

US Survey Feet

**2016**

Point Name: **628**

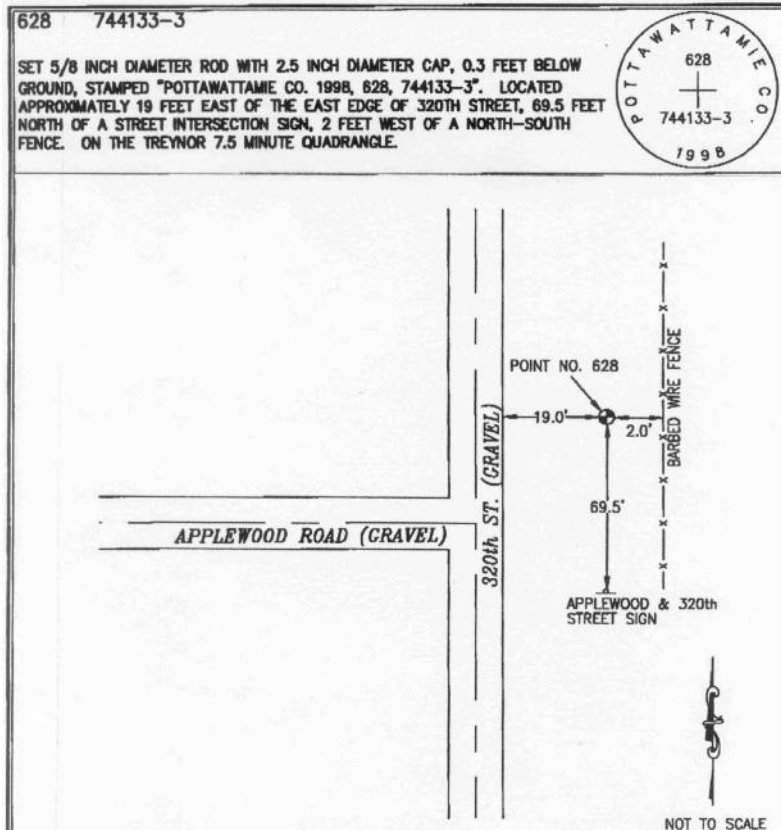
**Designation:** Pottawattamie Co 628 (set by Merrick in 1998)

NAD 83(NA2011) Latitude: **N41°09'45.42947"** Longitude: **W95°34'31.73958"**  
NAVD 88 Ortho Height: **1200.842sft** Ellip. Ht: **1109.599sft** Geoid12A

Iowa South Zone (1402) Northing: **430396.142sft** Easting: **1069007.737sft**  
Mapping Angle: **-1°22'02"** Combination Scale Factor: **0.999895648**

IaRCS Zone 6 Northing: **6932547.663sft** Easting: **16543466.358sft**  
Mapping Angle: **00° 06' 14"** Combination Scale Factor: **0.999988009**

**Monument Type:** The station is 5/8 inch dia. rod with a 2.5 inch dia. cap, stamped "Pottawattamie Co.1998, 628 744133-3".



*This document was prepared by Dan Corbin, Inc. on February 8, 2016 for Mills County, Iowa.*