

**Mills County, Iowa**

Horizontal Datum: **NAD 83(2011)** - Vertical Datum: **NAVD 1988**  
Iowa State Plane South Zone (1402)  
Iowa Regional Coordinate System, Zone 6 Council Bluffs  
US Survey Feet  
**2016**

Point Name: **629**

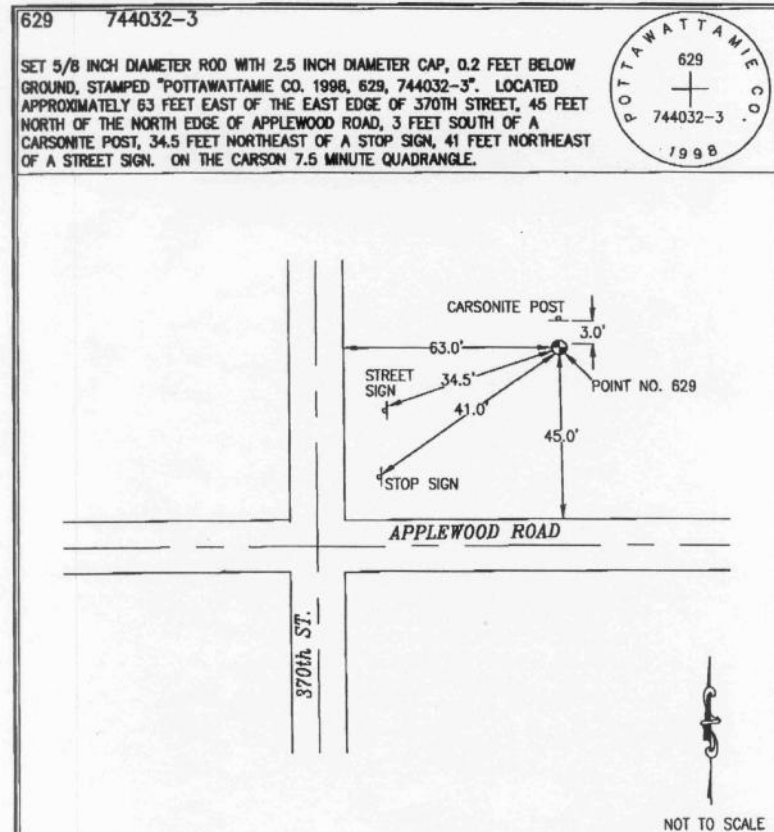
**Designation:** Pottawattamie Co 629 (set by Merrick in 1998)

NAD 83(NA2011) Latitude: **N41°09'37.30693"** Longitude: **W95°28'47.96766"**  
NAVD 88 Ortho Height: **1217.595sft** Ellip. Ht: **1125.849sft** Geoid12A

**Iowa South Zone (1402)** Northing: **428961.428sft** Easting: **1095274.685sft**  
Mapping Angle: **-1°18'15"** Combination Scale Factor: **0.999894900**

**IaRCS Zone 6** Northing: **6931787.645sft** Easting: **16569763.956sft**  
Mapping Angle: **00° 10' 00"** Combination Scale Factor: **0.999990633**

**Monument Type:** The station is 5/8 inch dia. rod with a 2.5 inch dia. cap, stamped "Pottawattamie Co.1998, 629 744032-3".



*This document was prepared by Dan Corbin, Inc. on February 8, 2016 for Mills County, Iowa.*